

CHRONIC CARE HEALTH HOME DEMOGRAPHICS BRIEF

July 2012 - June 2017

December 2017

(Final draft approved by IME January 2022)

Elizabeth Momany

Assistant Professor

Peter Damiano

Director, Public Policy Center

Professor, Preventive and Community Dentistry



LEARN MORE

• first-last@uiowa.edu • ppc.uiowa.edu
• 319-335-6800 • 310 S. Grand Ave, Iowa City, IA 52242
f uipcc t @uipcc i @uipcc

The University of Iowa prohibits discrimination in employment, educational programs, and activities on the basis of race, creed, color, religion, national origin, age, sex, pregnancy, disability, genetic information, status as a U.S. veteran, service in the U.S. military, sexual orientation, gender identity, associational preferences, or any other classification that deprives the person of consideration as an individual. The university also affirms its commitment to providing equal opportunities and equal access to university facilities. For additional information on nondiscrimination policies, contact the Director, [Office of Institutional Equity](#), the University of Iowa, 202 Jessup Hall, Iowa City, IA 52242-1316, 319-335-0705, oi-e-ui@uiowa.edu.

CONTENTS

Introduction	3
Enrollment Trends	4
Demographic Trends	6
CCHH members enrolled for at least 1 month during the year.....	6
CCHH members enrolled for at least 11 months during the year.....	9
Coverage Gaps	13
Conclusion	14
Appendix A: CCHH providers	15

INTRODUCTION

The Iowa Chronic Condition Health Home (CCHH) program incentivizes health care providers (**Appendix A**) in Iowa to offer additional services to Medicaid patients with chronic conditions through a monthly payment tied to the number and severity of the enrollee's chronic conditions (**Table 1**). The Health Home model was authorized under a state plan amendment approved by the Centers for Medicare and Medicaid Services with enrollment beginning July 1, 2012.

Health Home is a specific designation under section 2703 of the Patient Protection and Affordable Care Act and is a model of care that provides patient-centered, whole person, coordinated care for all stages of life and transitions of care specifically for individuals with chronic illnesses. For Iowa Medicaid, Health Home practices are enrolled Medicaid provider organizations capable of providing enhanced personal, coordinated care for Medicaid enrollees meeting program eligibility criteria. In return for the enhanced care provided, the Iowa Medicaid Enterprise (IME) offers monthly care coordination payments and the potential for annual performance-based incentives designed to improve patient health outcomes and lower overall Medicaid program costs.

Additional information about the Iowa CCHH Program is located at <https://dhs.iowa.gov/ime/providers/enrollment/healthhome>.

To be eligible for the CCHH Program, Medicaid enrollees must have at least two chronic conditions or one chronic condition and be at risk for developing a second condition from the following list:

- Hypertension
- Overweight (Adults with a Body Mass Index of 25 or greater/Children in the 85th percentile)
- Heart Disease
- Diabetes
- Asthma
- Substance Abuse
- Mental Health Problems

In addition, they could not be in IowaCare, PACE, Iowa Family Planning Network, Qualified Medicare Beneficiary, or be a presumptively eligible child or adult.

Table 1. Tier definitions and payments

Tier	Sum of chronic conditions	Monthly payment
1	1-3	\$12.80
2	4-6	\$25.60
3	7-9	\$51.21
4	10 or more	\$76.81

ENROLLMENT TRENDS

The CCHH program has undergone a number of changes as the Medicaid landscape in Iowa has changed. From July 1, 2012 through March 31, 2016 the CCHH program was coordinated through staff at IME. In particular, one program manager was responsible for onboarding new CCHH providers and helping providers to remain engaged in the program. On April 1, 2016 all Medicaid members, with a few exceptions such as dual eligibles and PACE participants, were placed in one of three Managed Care Organizations: AmeriGroup Iowa (Amerigroup) (UnitedHealthcare), AmeriHealth Caritas (AmeriHealth), or UnitedHealthcare Plan of the River Valley. Though there is still a coordinator for CCHH activities at IME, this coordination is with the MCOs and not with the individual CCHH providers. As of November 1, 2017, AmeriHealth is no longer a recognized MCO for Iowa Medicaid members.

The data within this report should be interpreted with care. From July 1, 2012 through March 31, 2016, we were able to determine CCHH eligibility through Medicaid monthly enrollment files. Beginning on April 1, 2016, the MCOs were responsible for providing IME with monthly listings of CCHH members, this information was no longer maintained on the IME enrollment database. Though there were clear specification for the MCO provision of CCHH enrollment data, only AmeriGroup provided the data on a monthly basis in the format requested. Both AmeriHealth and UnitedHealthcare provided a single file, sporadically with limited information. Due to these changes and discrepancies in data timing and format, the data for the period April 1, 2016 forward should be interpreted with care.

Figure 1 shows the CCHH enrollment by month and tier. The program took approximately 2 years to reach a static enrollment level, July, 2012-June, 2014. Tier 1 and Tier 2 enrollments are comparable from July, 2014-March, 2016, with Tier 2 enrollment slightly higher for most of this time period. At the initiation MCOs, there was a drop in CCHH members followed by consistent rise through December, 2017. The chart shows a significant decrease in March, 2017, which represents the period in which most CCHH members would require reassessment. Also, beginning in April, 2016 the proportion of the CCHH members in Tier 1 relative to Tier 2 is increased.

Figure 1. Number of members by month and tier

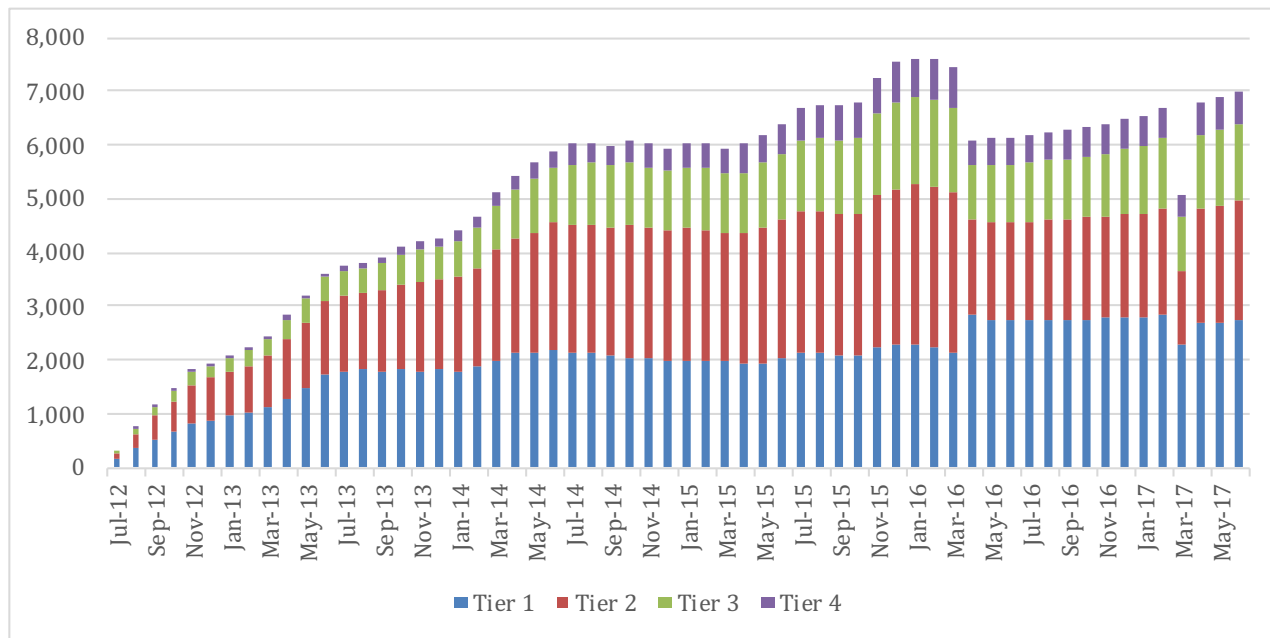


Figure 2 provides the rates of change in tier for CCHH members during the first 5 year of the program. The blue and red portions of the line indicate the number of members who left (blue) or entered (red) the CCHH. The green and purple portions of the table indicate the number of CCHH members who were reassigned to a lower tier (green) or higher tier (purple). For the purposes of this report, the bars describing what happened in April, 2016 and March to April, 2017 are of particular interest. Changes in CCHH program participation and tier in April, 2016 provides insight into the transitional experience of members as the MCOs took over the CCHH program enrollment and management. **Error!** Reference source not found. demonstrates that the number of members in CCHH fell dramatically, by more than 1,600 members as of April, 2016, more than the total number of members who left the program in the previous 6 months (See **Error!** Reference source not found.). It is important to note, that these members were still eligible for the Medicaid program, so they were not removed from the CCHH enrollment due to Medicaid ineligibility.

In addition, at the point of MCO transition, the proportion of members in tier 1 increased. This increase was primar-

ily the result of tier reassignment to a lower tier. 1,047 members were reassigned to tier 1 from higher tiers: 597 from tier 2, 308 from tier 3, and 142 from tier 4. Since the tier assignment is dependent on the member's number of chronic conditions, most reassignments are anticipated to move from a lower to higher tier as members age and new chronic conditions are identified. For most of the program, this pattern is prevalent. It is only in April, 2016 that we see significant movement and this movement is from higher tiers to tier 1.

Figure 2. Changes in CCHH tier status, during first 5 years

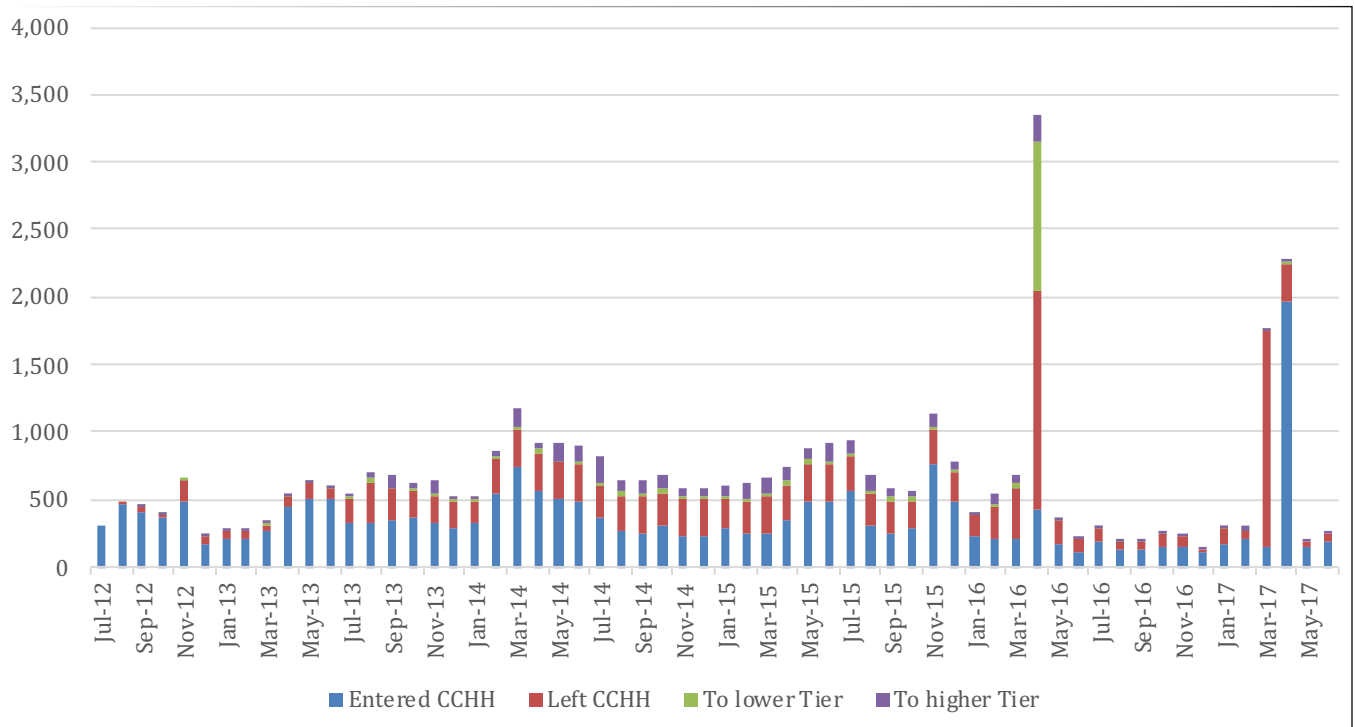


Table 2. Number of CCHH members leaving program in April, 2016 by Tier

Tier in month before leaving	Number in April	Total number in previous 6 months
1	477	549
2	691	578
3	361	256
4	181	82
Total	1710	1465

March 2017 represents a reassessment period for the CCHH program. Though it is not clear from the eligibility data why individuals lost their enrollment in the CCHH, **Error! Reference source not found.** shows that most members who lost enrollment in March, 2017 were re-enrolled in April, 2017. Of 1,754 members who lost CCHH enrollment in March, 1,667 were re-enrolled in April, 2017. Though there was a month of lost enrollment for these members, it is unlikely that this caused a significant change in the care they were receiving under the CCHH.

DEMOGRAPHIC TRENDS

CCHH MEMBERS ENROLLED FOR AT LEAST 1 MONTH DURING THE YEAR

Over the five years of the CCHH program there have been changes in the demographic characteristics of the enrolled population (**Table 3**). The distribution of CCHH members enrolled for at least 1 month by sex remained the same over time (Figure 3), however; the proportion of members enrolled for at least 1 month identifying as White rose while the proportion identifying as Black declined and the proportion refusing to declare a race also declined (Figure 4). The proportion of children and youth enrolled for at least 1 month increased over time, while the proportion of members enrolled for at least 1 month aged 18-64 years decreased (Figure 5). The proportion of members enrolled for at least 1 month in Tier 3 and Tier 4 rose over the five year period, while the proportion in Tier 1 and Tier 2 varied reflecting the adjustment to tier level that occurred in FY 2016 (Figure 6).

Table 3. Demographic characteristics of CCHH members who were enrolled for at least 1 month, FY 2013-2017

Demographics	Measure	FY 2013	FY 2014	FY 2015	FY 2016	FY 2017
Sex						
Female	Count	2745	4829	5429	5811	4866
	%	63%	62%	61%	61%	61%
Male	Count	1599	3013	3435	3774	3077
	%	37%	38%	39%	39%	39%
Race						
White	Count	2334	4272	4975	5590	4681
	%	54%	55%	56%	58%	59%
Black	Count	650	1190	1255	1278	1074
	%	15%	15%	14%	13%	14%
American Indian	Count	71	110	120	136	25
	%	2%	1%	1%	1%	0%
Asian	Count	87	119	138	167	134
	%	2%	2%	2%	2%	2%
Hispanic	Count	159	284	342	428	369
	%	4%	4%	4%	5%	5%
Pacific Islander	Count	1	4	25	25	24
	%	0%	0%	0%	0%	0%
Multiple Hispanic	Count	77	129	125	140	121
	%	2%	2%	1%	2%	2%
Multiple Other	Count	21	78	123	132	108
	%	1%	1%	1%	1%	1%
Undeclared	Count	944	1656	1761	1689	1407
	%	22%	21%	20%	18%	18%
Age						
0-17 years	Count	468	1439	1870	1848	1586
	%	11%	18%	21%	19%	20%
18-64 years	Count	3255	5543	5921	6551	5435
	%	75%	71%	67%	68%	68%
over 65 years	Count	621	860	1073	1186	922
	%	14%	11%	12%	12%	12%
Tier						
Tier 1	Count	2107	3114	2952	3921	3181
	%	49%	40%	33%	41%	40%
Tier 2	Count	1610	3073	3511	3151	2513
	%	37%	39%	40%	33%	32%
Tier 3	Count	516	1269	1655	1710	1572
	%	12%	16%	19%	18%	20%
Tier 4	Count	111	386	746	803	677
	%	3%	5%	8%	8%	9%

Figure 3. CCHH members enrolled for at least 1 month by sex and year, FY 2013-FY 2017

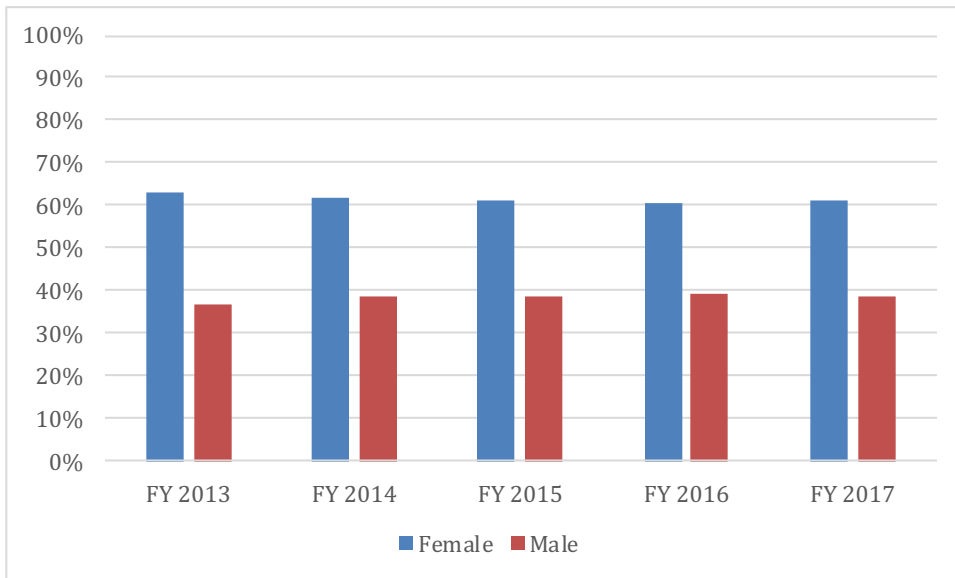


Figure 4. CCHH members enrolled for at least 1 month by race and year, FY 2013-FY 2017

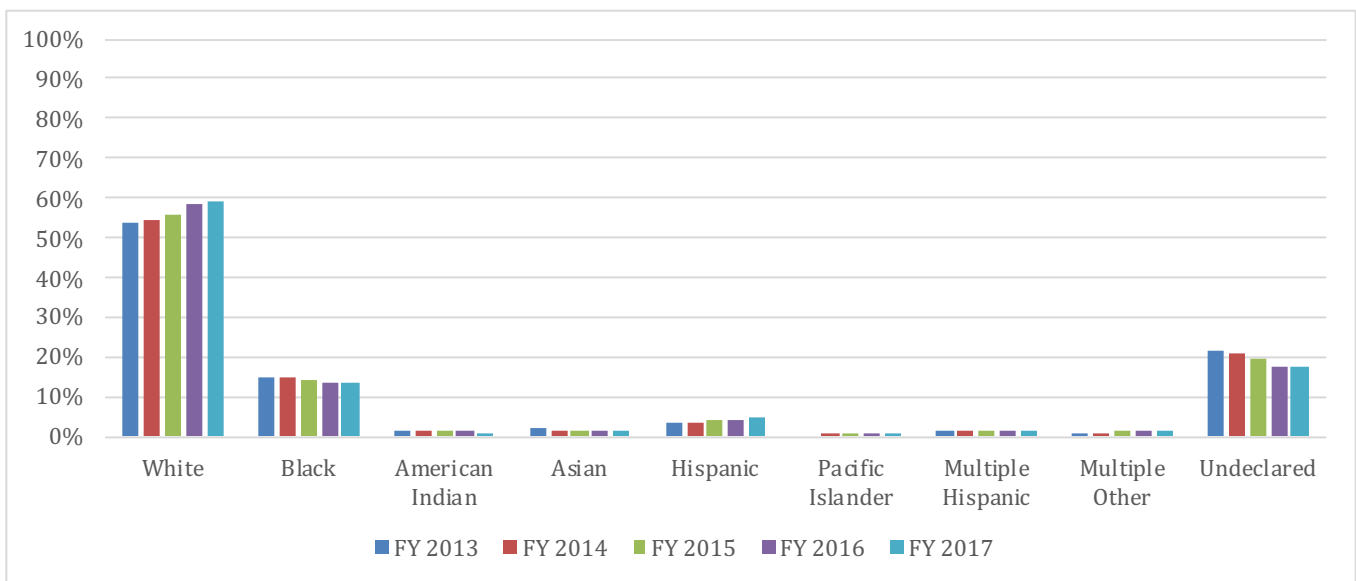


Figure 5. CCHH members enrolled for at least 1 month age by year, FY 2013-FY 2017

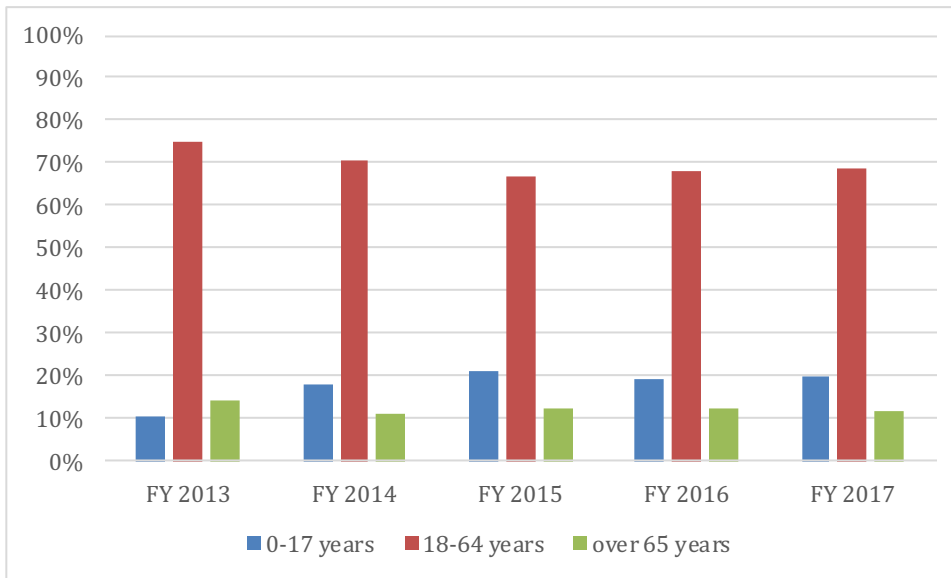
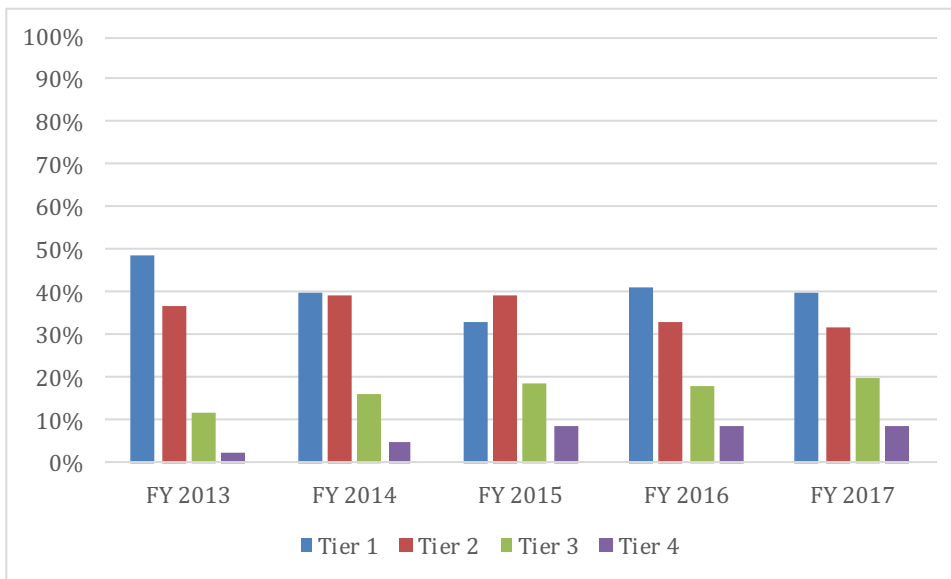


Figure 6. CCHH members enrolled for at least 1 month by tier and year, FY 2013-FY 2017



CCHH MEMBERS ENROLLED FOR AT LEAST 11 MONTHS DURING THE YEAR

The demographic trends seen over time for members enrolled for at least 1 month during FY 2013-FY 2017 are repeated when looking at members enrolled for at least 11 months during any given year for the same period.

Table 4. Demographic characteristics of CCHH members who were enrolled for at least 1 month, FY 2013-FY 2017

Demographics	Measure	FY 2013	FY 2014	FY 2015	FY 2016	FY 2017
Sex						
Female	Count	328	3114	2492	2492	3301
	%	63%	40%	59%	59%	61%
Male	Count	197	3073	1741	1712	2157
	%	38%	39%	41%	41%	40%
Race						
White	Count	343	1314	2264	2360	3144
	%	65%	52%	54%	56%	58%
Black	Count	71	450	665	654	794
	%	14%	18%	16%	16%	15%
American Indian	Count	7	45	55	7	12
	%	1%	2%	1%	0%	0%
Asian	Count	4	60	72	81	104
	%	1%	2%	2%	2%	2%
Hispanic	Count	9	88	162	187	240
	%	2%	4%	4%	4%	4%
Pacific Islander	Count	0	2	8	12	13
	%	0%	0%	0%	0%	0%
Multiple His-panic	Count	5	43	66	59	79
	%	1%	2%	2%	1%	1%
Multiple Other	Count	3	13	58	69	76
	%	1%	1%	1%	2%	1%
Undeclared	Count	83	510	883	775	996
	%	16%	20%	21%	18%	18%
Age						
0-17 years	Count	36	271	894	920	1135
	%	7%	11%	21%	22%	21%
18-64 years	Count	421	1881	2722	2757	3611
	%	80%	75%	64%	66%	66%
Over 65 years	Count	68	373	617	527	712
	%	13%	15%	15%	13%	13%
Tier						
Tier 1	Count	241	762	1232	1905	2329
	%	46%	30%	29%	45%	43%
Tier 2	Count	196	1097	1672	1236	1613
	%	37%	43%	40%	29%	30%
Tier 3	Count	71	513	871	714	1042
	%	14%	20%	21%	17%	19%
Tier 4	Count	17	153	458	349	474
	%	3%	6%	11%	8%	9%

Figure 7. CCHH members enrolled for at least 11 months by sex and year, FY 2013-FY 2017

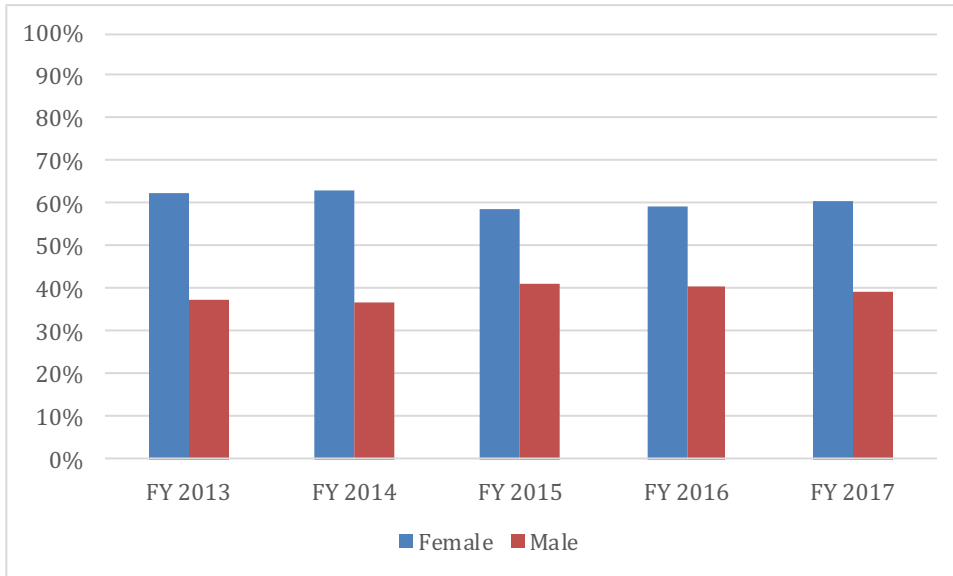


Figure 8. CCHH members enrolled for at least 1 month by race and year, FY 2013-FY 2017

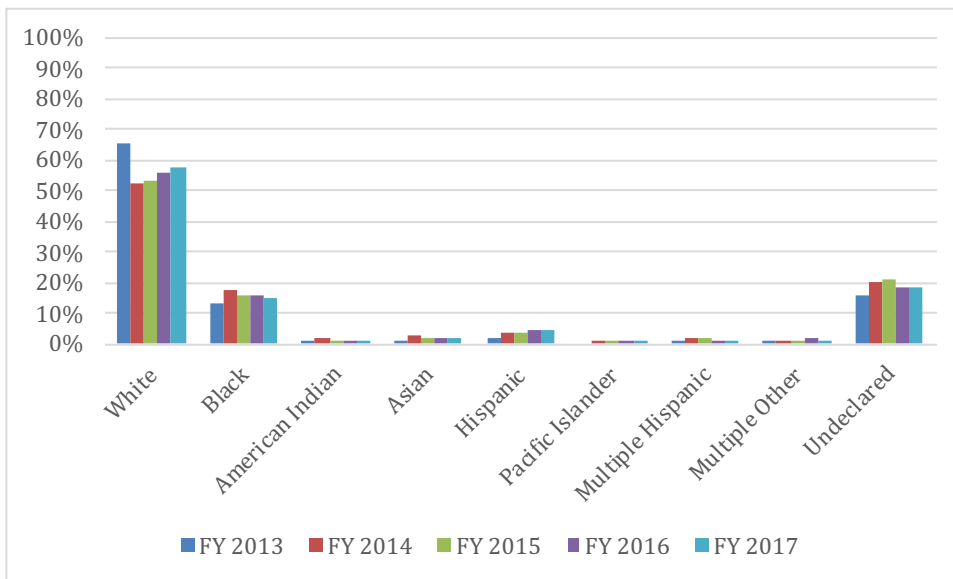


Figure 9. CCHH members enrolled for at least 1 month age by year, FY 2013-FY 2017

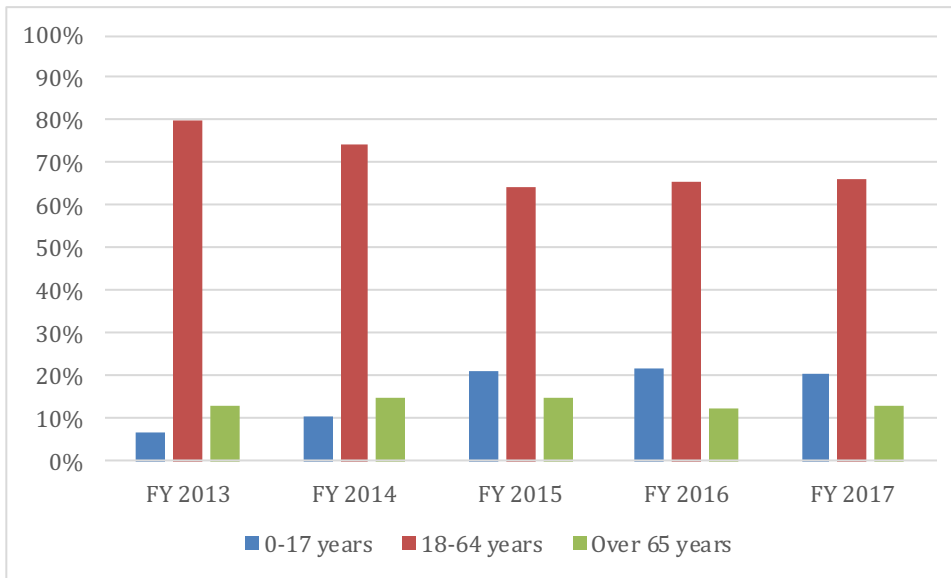
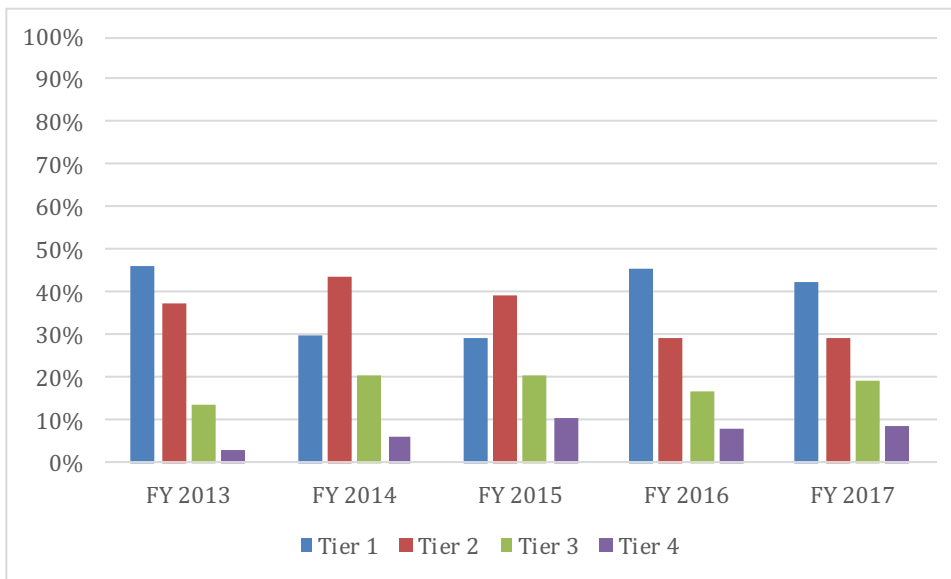


Figure 10. CCHH members enrolled for at least 1 month by tier and year, FY 2013-FY 2017



COVERAGE GAPS

Gaps in CCHH coverage may result from members losing eligibility for Medicaid programs, a failure of the system to maintain eligibility due to poor case management, or a disruption in enrollment due to changes in the care provider (Figure 2). During the first 5 years of the CCHH, 4,356 members experienced 5,294 a gaps in CCHH coverage (Table 5). Over 60% of the gaps were 1 month, and may not represent a serious disruption to CCHH services. However, 22% were from 2-6 months and another 9% were from 7-12 months, which may indicate a lack of CCHH services for members (Table 6). Most of these gaps occurred while members were still eligible for Medicaid. 49% of these gaps occurred after the MCOs assumed responsibility for CCHH activities (April 1, 2016–December 31, 2017), with over 1,600 reflected in the 1 month gap during March–April, 2017 (Figure 2).

Table 5. Number of members with gaps during first 5 years of CCHH

Number of gaps	Number of members
1 gap	3,530
2 gaps	720
3 gaps	101
4 gaps	4
5 gaps	1

Table 6. Number and percent of gaps during the first 5 years of CCHH

Time sSpan	Number gaps	Percent of gaps
1 month	3,277	62%
2-6 months	1,146	22%
7-12 months	499	9%
more than 1 year	372	7%
Total	5,294	100%

CONCLUSION

Over the first three years of the CCHH, enrollment rose, at first quickly and then more slowly over time. Following introduction of the MCOs there were changes in CCHH enrollment including a decrease in the number of members with CCHH coverage, slower growth in CCHH enrollment, and disruptions to CCHH membership.

APPENDIX A: CCHH PROVIDERS

Name	Address	City
NORTHEAST IA MED EDUCATION	2055 KIMBALL AVE STE 101	WATERLOO
PRIMARY HEALTH CARE INC	2353 SE 14TH STREET	DES MOINES
COMMUNITY HEALTH CENTERS OF SE IOWA	1706 W AGENCY RD	WEST BURLINGTON
MERCY FAMILY CLINIC FOREST PARK	1010 4TH ST SW	MASON CITY
MERCY FAMILY MEDICINE RESIDENCY	1010 4TH ST SW STE 340	MASON CITY
PEOPLES COMMUNITY HEALTH CLINIC INC	905 FRANKLIN STREET	WATERLOO
EAST DES MOINES FAMILY CARE CENTER	840 E UNIVERSITY AVE	DES MOINES
HIAWATHA PEDIATRIC CLINIC	1075 N CENTER POINT ROAD	HIAWATHA
MUSCATINE FAMILY PRACTICE-CEDAR ST	1616 CEDAR STREET	MUSCATINE
FAMILY HEALTHCARE INDIAN HILLS	2600 OUTER DRIVE N	SIOUX CITY
PEOPLES COMMUNITY HEALTH CLINIC INC	118 S MAIN ST	CLARKSVILLE
COMMUNITY HEALTH CENTERS OF SE IOWA	2409 SPRING STREET	COLUMBUS CITY
MERCY CLINICS INC	1120 GREENE STREET	ADEL
MERCY CLINICS INC	1750 48TH STREET STE 1	DES MOINES
MERCY CLINICS INC	411 LAUREL ST STE A120	DES MOINES
MERCY CLINICS INC	5900 E UNIVERSITY AVE #100	PLEASANT HILL
MERCY CLINICS INC	1350 DES MOINES ST STE 110	DES MOINES
MERCY CLINICS INC	4005 NW URBAN DALE DRIVE	URBAN DALE
MERCY CLINICS INC	307 EAST SCENIC VALLEY AVE	INDIANOLA
MERCY CLINICS INC	5615 NW 86TH STREET	JOHNSTON
MERCY CLINICS INC	800 E FIRST STREET STE 1700	ANKENY
MERCY CLINICS INC	319 EAST MAIN	PANORA
MERCY CLINICS INC	616 10TH STREET	PERRY
MERCY CLINICS INC	2605 SW WHITE BIRCH DRIVE	ANKENY
MERCY CLINICS INC	6601 SW NINTH STREET	DES MOINES
MERCY CLINICS INC	6200 AURORA AVE	URBAN DALE
MERCY CLINICS INC	25 WEST HICKMAN ROAD	WAUKEE
MERCY CLINICS INC	1601 NW 114TH STREET	CLIVE
MERCY CLINICS INC	1350 DES MOINES STREET # 100	DES MOINES
MERCY CLINICS INC	4005 NW URBAN DALE DRIVE	URBAN DALE
MERCY CLINICS INC	1055 JORDAN CREEK PKWY # 100	WEST DES MOINES
MERCY CLINICS INC	330 LAUREL STREET STE 2100	DES MOINES
MERCY CLINICS INC	5900 E UNIVERSITY AVE # 300	PLEASANT HILL
MERCY CLINICS INC	5615 NW 86TH STREET STE 200	JOHNSTON
MERCY CLINICS INC	1055 JORDAN CREEK PKWY # 102	WEST DES MOINES
MERCY CLINICS INC	800 E FIRST STREET STE 1200	ANKENY
MERCY CLINICS INC	1601 NW 114TH STREET STE 345	CLIVE
COMMUNITY HEALTH CARE, INC.	120 N RIPLEY STREET	DAVENPORT
PHYSICIANS CLINIC, INC.	933 E PIERCE	COUNCIL BLUFFS
PHYSICIANS CLINIC RISEN SON	1001 RISEN SON BLVD	COUNCIL BLUFFS
PHYSICIANS CLINIC GLENWOOD	320 EBAUGH ST	GLENWOOD
PHYSICIANS CLINIC, INC.	1400 SENATE AVE	RED OAK

Name	Address	City
EASTERN IOWA HEALTH CENTER	1201 3RD AVE SE	CEDAR RAPIDS
FLOYD VALLEY CLINICS	714 LINCOLN STREET NE	LEMARS
FAMILY HEALTH CARE MOVILLE CLINIC	410 MAIN STREET	MOVILLE
HEALTH HOME BROADLAWNS MEDICAL CENT	1801 HICKMAN ROAD	DES MOINES
AKRON MERCY MEDICAL CLINIC	321 MILL STREET	AKRON
MERCY CLINICS INC	207 CROCKER STREET SUITE 200	DES MOINES
SIOUXLAND COMMUNITY HEALTH CENTER	1021 NEBRASKA STREET	SIOUX CITY
MCFARLAND CLINIC PC FAM MEDICINE NO	3815 STANGE ROAD	AMES
MCFARLAND CLINIC PC AFTER HOURS CLI	1018 DUFF AVENUE	AMES
UNIVERSITY OF IOWA HOSPITAL AND CLI	200 HAWKINS DRIVE	IOWA CITY
COMMUNITY HEALTH CARE, INC.	500 W RIVER DRIVE	DAVENPORT
PHYSICIANS CLINIC, INC.	8601 WEST DODGE RD STE 216	OMAHA
RIVER HILLS COMMUNITY HEALTH CENTER	931 PENNSYLVANIA AVENUE	OTTUMWA
COMM HEALTH CTRS OF SOUTHEASTERN IA	400 NORTH 17TH STREET	KEOKUK
CORNERSTONE FAMILY PRACTICE	200 MAIN STREET	GUTTENBERG
ALL CARE HEALTH CENTER	902 S 6TH	COUNCIL BLUFFS
FAMILY MEDICINE CLINIC PC	1614 DIAMOND STREET PLACE	ONAWA
CRESCENT COMMUNITY HEALTH CENTER	1789 ELM STREET STE A	DUBUQUE
COVENANT CLINIC-PEDIATRICS	2710 ST FRANCIS DR STE 510	WATERLOO
SANFORD ROCK RAPIDS CLINIC	803 S GREEN STREET	ROCK RAPIDS
SANFORD ROCK RAPIDS GEORGE CLINIC	101 N MAIN STREET	GEORGE
SANFORD SHELDON CLINIC	800 OAK STREET	SHELDON
SANFORD SHELDON BOYDEN CLINIC	3971 320TH STREET	BOYDEN
SANFORD SHELDON HARTLEY CLINIC	512 3RD STREET NE	HARTLEY
SANFORD SHELDON SANBORN CLINIC	321 MAIN STREET	SANBORN
FAMILY HEALTHCARE DAKOTA DUNES	345 W STEAMBOAT	DAKOTA DUNES
FAMILY HEALTH CARE SERGEANT RD	4545 SERGEANT ROAD	SIOUX CITY
FAMILY HEALTH CARE SOUTH SIOUX CITY	3250 PLAZA DRIVE	SOUTH SIOUX CITY
PHYSICIAN CLINIC-RED OAK	1400 SENATE AVE	RED OAK
COVENANT CLINIC SHELL ROCK	309 S CHERRY ST, PO BOX 521	SHELL ROCK
COVENANT CLINIC SUITE 210	2710 ST FRANCIS DR STE 210	WATERLOO
COMM HEALTH CENTERS OF S IA LEON	302 NE 14TH STREET	LEON
COMM HEALTH CENTERS OF S IA LAMONI	802 EAST ACKERTY	LAMONI
COMM HEALTH CTRS OF SOUTHEASTERN IA	951 BROADWAY	HAMILTON
PRIMGHAR MERCY MEDICAL CENTER	240 NORTH RERICK AVENUE	PRIMGHAR
STEPHEN J VEIT MDPC	212 EAST BOW DRIVE	CHEROKEE
SHENANDOAH PHYSICIANS CLINIC	ONE JACK FOSTER DRIVE	SHENANDOAH
UNITYPOINT CLINIC - CLARKE COUNTY	827 SOUTH JACKSON	OSCEOLA
UNITYPOINT - GRIMES	101 SE DESTINATION DRIVE	GRIMES
UNITYPOINT - INGERSOLL AVE	2103 INGERSOLL AVENUE	DES MOINES
UNITYPOINT - MERLE HAY	4020 MERLE HAY ROAD STE 100	DES MOINES
UNITYPOINT - NORWALK	801 COLONIAL CIRCLE	NORWALK
UNITYPOINT-WAUKEE	30 EAST HICKMAN ROAD	WAUKEE
UNITYPOINT - SOUTHGLEN	7481 HWY 65/69	DES MOINES

Name	Address	City
REGIONAL FAMILY HEALTH-EDGEWOOD	702 W UNION STREET	EDGEWOOD
REGIONAL FAMILY HEALTH-STRAWBERRY	111 E MISSION STREET	STRAWBERRY POINT
REGIONAL FAMILY HEALTH-HOPKINTON	122 1ST STREET SW	HOPKINTON
REGIONAL FAMILY HEALTH WINTHROP	345 1ST STREET SOUTH	WINTHROP
REGIONAL FAMILY HEALTH-MANCHESTER	709 W MAIN STREET	MANCHESTER
PROMISE COMMUNITY HEALTH	338 1ST AVENUE	SIOUX CENTER
RIVER HILLS COMM HEALTH OTTUMWA	201 S MARKET STREET	OTTUMWA
RIVER HILLS COMM HEALTH CENTERVILLE	1015 N 18TH STREET SUITE C	CENTERVILLE
RIVER HILLS COMM HEALTH RICHLAND	100 W MAIN STREET	RICHLAND
MERCY CLINIC PEDIATRICS JOHNSTON	5615 NW 86TH STREET ST 200	JOHNSTON
MERCY CLINICS CAMPUS	411 LAUREL STREET STE A120	DES MOINES
MERCY CLINIC JOHNSTON	5615 NW 86TH STREET	JOHNSTON
MERCY BRIARWOOD MEDICAL CLINIC	120 NW 36TH STREET	ANKENY
MERCY CLINICS PEDIATRICS NORTH	800 E 1ST STREET STE 1200	ANKENY
MERCY CLINIC NORTH	800 E 1ST STREET STE 1700	ANKENY
MERCY CLINICS BEAVERDALE	1750 48TH STREET STE 1	DES MOINES
MERCY CLINIC PEDIATRIC WEST	1601 NW 114TH STREET STE 345	CLIVE
MERCY CLINICS JORDAN CREEK IM	4005 NW URBANDALE DR	URBANDALE
MERCY CLINICS PEDIATRICS EAST	5900 E UNIVERSITY #300	PLEASANT HILL
MERCY CLINICS EAST	5900 E UNIVERSITY AVE #100	PLEASANT HILL
MERCY CLINICS ADEL	1120 GREENE STREET	ADEL
MERCY CLINICS PEDIATRICS CENTER	330 LAUREL STREET STE 2100	DES MOINES
MERCY CLINIC PERRY	616 10TH STREET	PERRY
MERCY CLINICS URBANDALE AURORA	6200 AURORA AVENUE	URBANDALE
MERCY CLINICS SOUTH	6601 SW 9TH STREET	DES MOINES
MERCY CLINICS CARLISLE	125 SCHOOL STREET	CARLISLE
MERCY CLINICS PANORA	319 E MAIN STREET	PANORA
MERCY CLINICS EAST VILLAGE	1350 DES MOINES ST STE 110	DES MOINES
MERCY CLINICS WEST	1601 NW 114TH STREET STE 245	CLIVE
MERCY CLINICS WEST GRAND	119 19TH STREET STE 106	WEST DES MOINES
MERCY CLINICS WESTOWN IM	5901 WESTOWN PKWY STE 240	WEST DES MOINES
MERCY CLINICS PRAIRIE TRAIL	2605 SW WHITE BIRCH DR	ANKENY
MERCY CLINICS WAUKEE	25 WEST HICKMAN RD	WAUKEE
MERCY CLINICS INDIANOLA	307 EAST SCENIC VALLEY AVE	INDIANOLA
MERCY CLINICS OTTUMWA	1005 PENNSYLVANIA AVE #104	OTTUMWA
PRIMARY HEALTH CARE	2353 SE 14TH STREET	DES MOINES
PELLA REGIONAL HEALTH CENTER	405 MONROE	PELLA
PELLA REG HEALTH CTR BUSSEY	411 MERRILL STREET	BUSSEY
PELLA REG HEAKTH CTR KNOXVILLE	1208 N LINCOLN	KNOXVILLE
PELLA REG HEAKTH CTR MONROE	100 EAST SHERMAN	MONROE
PELLA REG HEALTH CTR OTTUMWA	920 N QUINCY AVE	OTTUMWA
PELLA REG HEALTH CTR SULLY	704 3RD STREET	SULLY
PELLA REG HEALTH CTR NEW SHARON	302 S PARK AVE	NEW SHARON
UPC FAMILY MEDICINE PARKS AREA	2301 EAST 14TH STREET	DES MOINES

Name	Address	City
UPC FAMILY MEDICINE PLEASANT HILL	1205 COPPER CREEK DRIVE	PLEASANT HILL
UPC INTERNAL MED AT WEST DES MOINES	6010 MILLS CIVIC PKWY #100	WEST DES MOINES
UPC PEDIATRICS WAUKEE	400 EAST HICKMAN ROAD	WAUKEE
UPC FAMILY MEDICINE ANKENY PRAIRIE	2515 SW STATE STREET STE 200	ANKENY
UPC INTERNAL MED UNITED MEDICAL PRK	1717 WEST RIDGEWAY AVENUE	WATERLOO
UPC FAMILY MEDICINE WATERLOO	212 WEST DALE STREET STE 101	WATERLOO
UPC FAMILY MEDICINE EVANSDALE	3701 LAYFAYETTE ROAD	EVANSDALE
UPC FAMILY MEDICINE JOHNSTON	5900 NW 86TH STREET STE 100	JOHNSTON
UPC FAMILY MEDICINE URBANDALE	2901 86TH STREET	URBANDALE
UPC INTERNAL MEDICINE LAKEVIEW	6000 UNIVERSITY AVENUE # 300	WEST DES MOINES
UPC FAMILY MEDICINE CEDARLOO	2624 ORCHARD DRIVE	CEDAR FALLS
UPC FAMILY MEDICINE ROHLF	312 9TH STREET SW SUITE 1200	WAVERLY
UPC PEDIATRICS WALNUT CREEK	1271 8TH STREET SUITE 100	WEST DES MOINES
UPC FAMILY MEDICINE CORRIDOR	9255 ATLANTIC DRIVE SW	CEDAR RAPIDS
UPC PEDIATRICS METHODIST PLAZA	1221 PLEASANT STREET #170	DES MOINES
UPC FAMILY MEDICINE AT INDIANOLA	301 EAST HILLCREST AVENUE	INDIANOLA
UPC PEDIATRICS LAKEVIEW	6000 UNIVERSITY AVENUE #100	WEST DES MOINES
UPC INTERNAL MED METHODIST PLAZA	1221 PLEASANT STREET STE 200	DES MOINES
UPC FAMILY MEDICINE ALLISON	502 LOCUST	ALLISON
UPC FAMILY MEDICINE DENVER	111 TOWER STREET	DENVER
UPC FAMILY MEDICINE GRUNDY CENTER	101 EAST J AVENUE SUITE 120	GRUNDY CITY
UPC FAMILY MEDICINE HUXLEY	305 SOUTH HIGHWAY 69	HUXLEY
UPC FAMILY MEDICINE LAKEVIEW	6000 UNIVERSITY AVENUE # 101	WEST DES MOINES
UPC FAMILY MEDICINE NORTHWEST	6400 HICKMAN ROAD	WINDSOR HEIGHTS
UPC GREENE COUNTY	1002 WEST LINCOLNWAY	JEFFERSON
UPC IM ANKENY PRAIRIE TRAIL	2515 SOUTHWEST STATE ST #100	ANKENY
UPC INTERNAL MEDICINE PENN AVE	1201 PENN AVENUE	DES MOINES
UPC FAMILY MEDICINE BETTENDORF	4480 UTICA RIDGE ROAD # 2236	BETTENDORF
UPC FAMILY MEDICINE MULBERRY	1518 MULBERRY AVENUE	MUSCATINE
UPC FAMILY MEDICINE NORTH PORT	3426 NORTH PORT DRIVE # 100	MUSCATINE
UPC FAMILY MEDICINE SPRING STREET	3411 SPRING STREET	DAVENPORT
UPC FAMILY MEDICINE WILTON	400 OVESEN DRIVE	WILTON
UPC INTERNAL MEDICINE 53RD STREET	4317 EAST 53RD STREET	DAVENPORT
UPC INTERNAL MEDICINE BETTENDORF	4480 UTICA RIDGE SUITE 2230	BETTENDORF
UPC INTERNAL MEDICINE MULBERRY	1518 MULBERRY AVENUE	MUSCATINE
UPC PEDIATRICS MULBERRY	1518 MULBERRY AVENUE	MUSCATINE
UPC FAMILY MEDICINE 53RD STREET	4311 EAST 53RD STREET	DAVENPORT
UPC FAMILY MEDICINE WEST DES MOINES	6010 MILLS CIVIC PRKWY # 200	WEST DES MOINES
UPC FAMILY MEDICINE AT OELWEIN	124 FIRST AVENUE SOUTHEAST	OELWEIN
UPC FM UNITED MEDICAL PARK	1731 WEST RIDGEWAY AVE # 100	WATERLOO
UPC FAMILY MEDICINE NORTHBRIDGE	400 S BLAIRSFERRY CROSSING	HIAWATHA
UPC FAMILY MEDICINE AT MOUNT VERNON	200 VIRGIL AVENUE	MT VERNON
UPC FAMILY MEDICINE BELLE PLAINE	105 9TH AVENUE	BELLE PLAINE
UPC FAMILY MEDICINE CLARENCE	411 1ST AVENUE	CLARENCE

Name	Address	City
UPC FAMILY MEDICINE MARION	2996 7TH AVENUE	MARION
UPC FAMILY MEDICINE TIPTON	1412 CEDAR STREET	TIPTON
UPC FAMILY MEDICINE VINTON	1803 C AVENUE	VINTON
UPC FAMILY MEDICINE WESTSIDE	2375 EDGEWOOD ROAD SOUTHWEST	CEDAR RAPIDS
UPC INTERNAL MEDICINE UC HIAWATHA	1001 NORTH CENTER POINT ROAD	HIAWATHA
UPC PEDIATRICS BETTENDORF	4480 UTICA RIDGE SUITE 1120	BETTENDORF
UPC PEDIATRICS CEDAR RAPIDS	855 A AVENUE NORTHEAST	CEDAR RAPIDS
UPC PEDIATRICS ANKENY	909 SOUTHWEST ORALABOR ROAD	ANKENY
UPC FAMILY MEDICINE ELDORA	1506 EDGINGTON AVENUE	ELDORA
UPC FAMILY MEDICINE MEDICAL DISTRIC	830 4TH AVENUE SOUTHEAST	CEDAR RAPIDS
UPC FAMILY MEDICINE PARKERSBURG	502 THIRD STREET	PARKERSBURG
UPC FAMILY MEDICINE ANKENY NORTH	1105 NORTH ANKENY BLVD # 100	ANKENY
BLANK CHILDREN'S ADOLESCENT CLINIC	1212 PLEASANT STREET STE 406	DES MOINES
BLANK CHILDREN'S PEDIATRIC CLINIC	1212 PLEASANT STREET STE 300	DES MOINES
MADISON COUNTY MEDICAL ASSOC PC	60 E COURT ST	WINTERSET
PRIMARY HEALTH CARE INC	3509 E 29TH STREET	DES MOINES
FAMILY HEALTHCARE NORTHSIDE	4230 HAMILTON BLVD	SIOUX CITY
FAMILY MEDICINE CLINIC FVH	15 EAST 2ND STREET	REMSEN
CORNERSTONE FAMILY PRACTICE	104 S MAIN STREET	GARNAVILLO
COVENANT CLINIC-ARROWHEAD	226 BLUEBELL ROAD	CEDAR FALLS
COMM HEALTH CTRS OF SOUTHEASTERN IA	2409 SPRING STREET	COLUMBUS CITY
IME INTERNAL	100 ARMY POST ROAD	DES MOINES
PRIMARY HEALTH CARE INC	1200 UNIVERSITY STE 200	DES MOINES
FAMILY MEDICINE CLINIC FVH	101 EAST PINE	MARCUS
CORNERSTONE FAMILY PRACTICE	101 S WASHINGTON	EDGEWOOD
PRIMARY HEALTH CRE INC	412 EAST CHURCH STREET	MARSHALLTOWN
PRIMARY HEALTH CARE INC	1301 CENTER STREET	DES MOINES