

Moving Forward, Looking Back...

The 2014-2015 Annual Report





From the Director:



I am pleased to present the Public Policy Center's Annual Report for academic year 2014-15. The report highlights the center's achievements in: a) conducting externally funded research, b) engaging the university and the broader community in a variety of policy-relevant events, c) providing research-related experiences for students, and d) supporting interdisciplinary and collaborative activities to further high quality research and scholarship.

This has been another exceptional year for the people associated with the Center. In 2014-15, we maintained nearly \$32 million dollars in active grants and contracts. This funding supported innovative research on a wide breadth of topics, including health care reform, automated vehicles, vehicle safety, water and air quality, housing, income inequality, education policy and taxation, changes in school meal policy, and racial policies. The center provided nearly 89 undergraduate and graduate students, from a wide variety of disciplines, with applied research training experience and opportunities to collaborate with their peers and colleagues. The Iowa Social Science Research Center (ISRC) continued its uniquely positioned services, assisting scholars in submitting over 50 grant applications and collecting data for over 20 projects.

We again hosted and co-sponsored events for students, policymakers and the public on some of the most challenging policy topics such as the balance between agriculture and water quality and quantity, and the politics of immigration. The Forkenbrock Series also featured events including The Lunch and Learn sessions with state legislators, lectures by distinguished national figures, film-screenings, and day-long symposia. All of our events, from our symposium about *Renewable Energy*, to the film screening of *Woke Up Black*, to the panel session about the *Future of Health Care for Veterans*, provided a forum for spirited, interdisciplinary dialogue about these difficult issues, presented from all perspectives.

I am grateful to the members of the center's National Advisory Committee, our esteemed colleagues from across the nation, who participated in our first annual meeting in December 2014. We received valuable feedback about growing our research programs, disseminating the results of our research, and measuring our impact on policymakers and the public.

For the coming year, the PPC is again pleased to be able to support the Policy Matters class in collaboration with the Departments of History and Sociology, bringing senior faculty, policy experts and critical topical discussion to undergraduates in the more personal "Big Idea" format. We will be expanding the methodological support available through the ISRC to improve the quality of research and scholarship among social scientists. We are also hosting the *Run Up to the 2016 Iowa Caucus* series which will involve collaborations with community partners such as the Iowa City Book Festival and the Hoover Presidential Library, and will include a variety of events on pertinent topics such as the history of the caucuses, media coverage of the caucuses, and political discourse.

The PPC is home to nearly 150 faculty, staff and students with appointments ranging from the humanities to the social, natural, and medical sciences. I am humbled and privileged to work with these dedicated staff and faculty and am grateful for all their hard work that drives the center's success as we meet the University's mission of creating new knowledge and sharing this information with the public as we expand student's horizons with unique learning opportunities. On behalf of all of us, thank you for your support and we look forward to working with you in 2015-16.

Highlights



External Funding

The Public Policy Center had *39 grants* in AY 2014-15 with a total funding of *\$31.72 million*.



Student Employees

During AY 2014-15, the PPC *employed 89 students* in many capacities including Research Assistants, administrative support and as data collectors.



Student Research

PhD student Astha Singhal was lead author of an article published in Health Affairs, *one of the top three journals* in the area of health policy.



Staff Researcher of the Year Award

Dan McGehee, Transportation & Vehicle Safety Policy Program Director, received the University of Iowa Staff Researcher of the Year award and had the *highest level of external support* of any single scholar on campus.



International Workshop on Automated Vehicle Policy

Transportation & Vehicle Safety Policy Program Director conducted a workshop on automated vehicle policy at the University of Iowa. *Fifteen of the most influential world leaders* on automated vehicles participated.

Funding

University of Iowa Public Policy Center
External Funding for FY15*



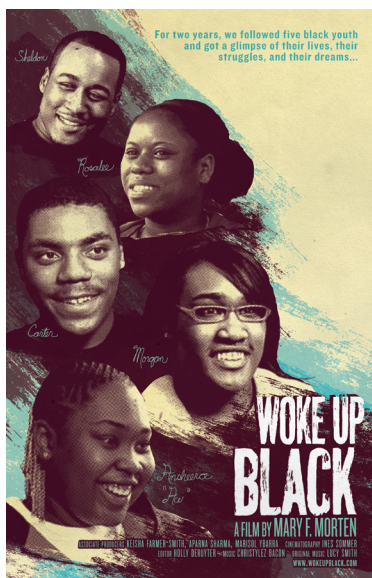
*Total funding awarded for current and pending projects. Pending projects include those with project start/end dates that fall within the FY14 or beyond.



Community Engagement

In 2008, the **Forkenbrock Series on Public Policy** was established to expand the public engagement activities of the PPC by providing interdisciplinary forums to share information on important policy-related topics with policymakers and the public. The series sponsors lectures, film screenings, panel discussions and symposia designed to bring together academic researchers, policymakers, and other key stakeholders such as business leaders, students and the public on the most pressing issues of our time.

Popularity of *Woke Up Black* Warrants a Second Screening and Panel Discussion



"If you had a problem in the black community, and you brought in a group of white people to discuss how to solve it, almost nobody would take that panel seriously. In fact, there'd probably be a public outcry. It would be the same thing for women's issues or gay issues.

But every day, in local arenas all the way to the White House, adults sit around and decide what problems youth have and what youth need, without ever consulting us." ~ Jason, 17 years old, Youth Force Member, Bronx, NY

"I don't have any felonies, never been to jail, never been to juvey... nothin'. I have no record, don't do drugs... nothin', but I've always had a problem with the police. And it's sad, like 'cause I have more friends that do do

all that and have the same problems that I have, ya' know? I just woke up black."

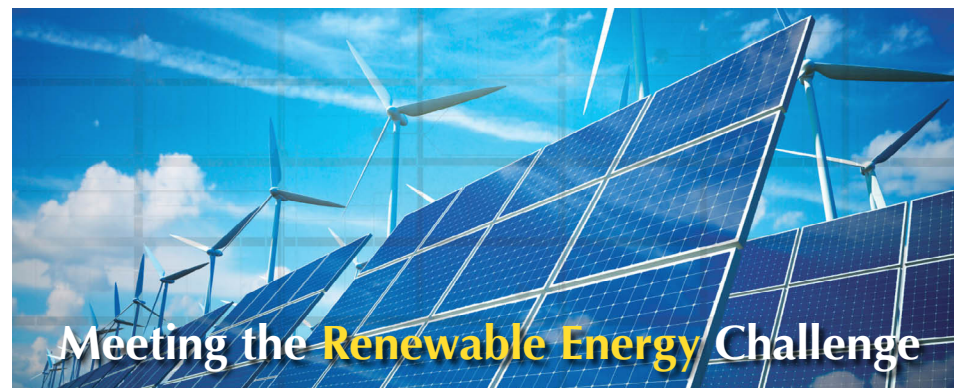
~ San Francisco Bayview area youth

On Wednesday, September 24, the Public Policy Center hosted a screening of the documentary, *Woke Up Black*. The film documents a two-year period in the lives of five black youth ages 16-21, capturing both day-to-day life events such as family gatherings and interactions with the justice system, as well as major milestones such as high school graduations and first days at college. The film focuses on the youths' ideas and opinions in their own words, and underscores the humanity that we all share regardless of race or age.

Morgan Price, one of the film's subjects, is a Graduate Research Assistant with the PPC's Transportation and Vehicle Safety Policy program. She has a BSE in Biomedical Engineering from Iowa and is a current MS candidate in Epidemiology at the UI College of Public Health.

Price, along with *Woke Up Black* Director Mary Morten and documentary subjects Carter Tindell-Hall and Ansheera "Ace" Hilliard, participated in a panel discussion following the film screening. Hilliard's participation contributed another facet to the discussion, as a self-identified gender queer. Marcella David, former Professor of Law & International Studies and Associate Dean for the UI College of Law, moderated the panel.

The free screening and discussion was held at Shambaugh Auditorium in the UI Main Library for a standing room only crowd. A second screening and discussion was held in October so more guests could participate.



A combination of events in October made up the "Meeting the Renewable Energy Challenge" symposium. The symposium took a broad look at the scientific challenges and policy issues surrounding renewable energy, with special reference to Iowa and the Midwest. Should the government support a shift from nonrenewable to renewable sources of energy? Will shifting toward renewables decrease the pace of climate change or make us more energy secure? What are the technical barriers to rapidly increasing our reliance on renewable energy? What policy changes are necessary or desirable in order to promote renewable energy growth? Topics covered will include infrastructure development (e.g. wind farms; transmission lines), biofuels, emerging environmental problems, and distributed energy policy.

The series of events started off on October 8 with a screening of the film, *Dirty Business: "Clean Coal" and the Battle for Our Energy Future*. In the digital age, half of our electricity still comes from coal. Dirty

Business reveals the true social and environmental costs of coal power and tells the stories of innovators who are pointing the way to a renewable energy future.

Guided by Rolling Stone reporter Jeff Goodell, the film examines what it means to remain dependent on a 19th century technology that is the largest single source of greenhouse gases. Can coal really be made clean? Can renewables be produced on a scale large enough to replace coal? The film seeks answers in a series of stories shot in China, Saskatchewan, Kansas, West Virginia, Nevada and New York. It featured (among others) Dr. James Hansen, who presented a lecture as part of the series.

The event continued the following week with a Student Energy Expo (October 15), which offered opportunities for students to learn and share information about their own research, related to renewable energy and similar topics. That evening, Mark Jacobson (Director of the Atmosphere/Energy Program and Professor

of Civil and Environmental Engineering at Stanford University) Robert Bryce (a senior fellow at the Manhattan), and members of the UI Student Debate Team participated in an Oxford-style debate, arguing their stances on the possibility of 100% renewable energy by the year 2030.

The "Meeting the Renewable Energy Challenge" symposium followed the next day. Jacobson and Bryce continued their dialogue on the topic as keynote speakers. Dr. James Hansen presented his keynote remarks later that afternoon. Hansen is the former Director of the NASA Goddard Institute for Space Studies, and now directs a program in Climate Science, Awareness and Solutions at Columbia University's Earth Institute. He was trained in physics and astronomy in the space science program of Dr. James Van Allen at the University of Iowa.

That evening, Hansen presented a public lecture on global climate policies, entitled Speaking Truth to Power: Lessons from Iowa and Relevance to Global Climate Policies.



Engagement, cont.

BROWN BAG

Lunch and Learn

PPC Hosts Legislative Lunch & Learn Series

The Legislative Brown Bag Lunch and Learn Series is designed to allow University of Iowa faculty to share their expertise with Iowa legislators on critical issues relevant to the current session. They are also intended to familiarize legislators with experts to whom they can turn for guidance from research-based evidence. Four sessions were held this year at the Iowa State Capitol.

On February 23, Drs. Pete Damiano (Public Policy Center and UI College of Dentistry) and Michael Flaum (UI Department of Psychiatry) presented an update on the Affordable Care Act and the mental health redesign for adults.

On March 9, Chuck Fluharty and Keith Mueller, both of the Rural Policy and Research Institute (RUPRI) and the UI College of Public Health, traveled to Des Moines to present an overview of RUPRI and critical policy issues for rural communities.

Dan McGehee (Public Policy Center), Chris Schwarz (UI National Advanced Driving Simulator), David Conrad (UI Office of Research and Economic Development) and Mark Nolte (Iowa City Area Development) presented an overview on March 23 of the policy issues Iowa will face in introducing autonomous vehicles into the state, and the potential impact this could have on economic development.

The last session of the series was held on March 30. Linda Snetselaar (UI Associate Provost of Outreach and Engagement and Professor, UI College of Public Health), Helena Laroche (UI Carver College of Medicine), and Denise Aikorieg, (Des Moines Area Community College), talked about community engagement and intervention around obesity.



Panel Comes Together on Veterans Day to Discuss the Future of Health Care for Veterans

On Veterans Day, November 11, the Forkenbrock Series on Public Policy presented "The Future of Health Care for Veterans." The panel discussion examined the challenges of meeting the needs of aging veterans, rural services, veteran mental health and other issues.

U.S. Representative Dave Loebsack, who is on the Armed Services Committee, welcomed the audience and praised the care given to veterans of Iowa, despite recent issues the Veterans Administration (VA) and its hospitals have faced.

Dr. Peter Kaboli, MD, Chief of Medicine at the Iowa City VA Health Care System, delivered the keynote remarks. He outlined the six qualities of an ideal health care system: safe, effective, patient-centered, timely, efficient, and equitable.

Addressing each of these, Kaboli talked about the VA leading the way in electronic medical records, bar coding

medications, and root cause analyses, establishing a culture of safety that preceded many other health care systems. The VA is effective in that it is not a fee for service system - everyone in the system has the same benefits, and high-cost, high-risk procedures are regionalized. The VA is patient-centered in its understanding of the unique health care needs of veterans, efficient and equitable in that all patients receive the same benefit and are assured of being seen. He did admit some deficiencies in timeliness, but also explained that some of the metrics for rating timeliness are unrealistic.

Kaboli rounded out his remarks with an overview of Secretary of Veterans Affairs Robert McDonald's Blueprint for Excellence. The four overriding themes in this plan for the future of the VA were: improve performance, promote a positive culture of service, advance health care innovation,

and increase operational effectiveness and accountability.

Following Kaboli's comments, a panel consisting of Allen Roberts, UI Military and Veteran Educational Specialist; Lieutenant Colonel Joe Albrecht, Professor of Military Science, UI Army ROTC; Gary Marquardt, past commander of the VFW in Iowa; Erin Siniff, Social Worker, Iowa City VA Health Care System; and Larry Lockwood, University of Iowa Registrar and Vietnam Veteran, each gave their perspective as providers or users of the VA System.

To view video of the event, click [here](#).



Thomas Frank Explains "What's the Matter with Liberals?"

Thomas Frank, a Salon politics and culture columnist, presented his lecture, "What's the Matter with Liberals?" to an enthusiastic crowd, as one of the PPC's "Run Up to the 2016 Caucus" events.

Frank's many books include "What's The Matter With Kansas?" "Pity the Billionaire" and "One Market Under God." He is the founding editor of The Baffler magazine.

Frank contends that liberals lose when objective circumstances seem to be going their way. He talked about Obama disillusionment - people swept up in the Obama pre-election mania, are now disappointed in him. At the historical turning point of financial crisis, he succeeded in getting Wall Street bailed out, but average people are just starting to recover now.

He says people who defend the President do it on the grounds that he is essentially powerless, and we need to stop having such high expectations.

To hear Frank's corresponding interview on Iowa Public Radio's "River to River", click [here](#).

Education

The PPC contributes to the educational mission of the University by offering applied research training opportunities for graduate and undergraduate students. Here is a small sampling of some of the outstanding work from our students:

Astha Singhal



Astha Singhal, a Research Assistant in the Health Policy Division of the PPC, had an outstanding year of accomplishments with her study, “Eliminating Medicaid Adult Dental Coverage Led to Increased Dental Emergency Visits and Associated Costs” which examined the impacts of California’s cut on dental coverage for Medicaid enrollees.

All states are required to provide dental coverage for children in Medicaid, but dental coverage for adult enrollees is optional. When faced with a fiscal crisis, several states limit or eliminate adult dental coverage, as California did in July 2009. Singhal and co-authors examined the impact of California’s elimination of adult dental coverage on Emergency Department (ED) use for dental problems, over 2006-2011. They also compared costs associated with dental ED visits and Medicaid savings from dental coverage cuts.

The researchers found that the policy change led

to a significant and immediate increase in dental ED use, amounting to more than 1,800 additional dental ED visits per year. Young adults, members of racial/ethnic minority groups, and urban residents were disproportionately affected. Average yearly costs associated with dental ED visits increased by 68 percent. Singhal and co-authors note that this evidence is particularly important as the Medicaid population expands nationally under the Affordable Care Act and several states contemplate changing their Medicaid adult dental coverage policy.

Her work on this topic was published in *Health Affairs*, one of the leading journals in health policy, and was cited on Reuters Health online.

Singhal was also awarded the American Association of Public Health Dentistry’s First Place Leverett Graduate Student Merit Award for Outstanding Achievement in Dental Public Health for the same work. The award was presented to her at the National Oral Health Conference in April.

The Leverett Award is given based on the following criteria: originality and design of the project, description of results and conclusions, quality of the results from the project, scientific value of the project, Dental Public Health value of the project, quality of the project presentation, and demonstrated mastery of the subject.

Singhal’s research focuses on emergency department visits for dental problems. Astha was also a Presidential Fellow at the University of Iowa and Public Relations Coordinator for the student organization, Association for India’s Development. After receiving her PhD, Singhal took a position as Assistant Professor in the Department of Health Policy and Health Services Research at Boston University.

Elizabeth Golembiewski



Graduate Research Assistant Elizabeth Golembiewski presented at the Center for Disease Control and Prevention (CDC) National Conference on Health Communication, Marketing, and Media in Atlanta, Georgia. The conference brought together multidisciplinary research and collaboration to shape the future of health communication, marketing, and media practices. Golembiewski presented the research she did with Dr. Natoshia Askelson and the Iowa Department of Education, on how to increase participation in school breakfast among high schoolers in Iowa.

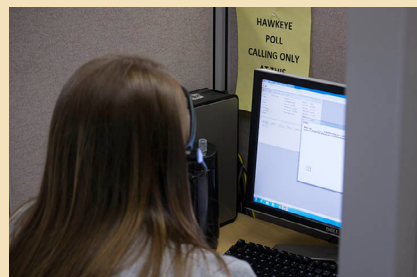
Golembiewski and Askelson worked directly with students at three high schools in Iowa to help them brainstorm and implement ways to get their peers excited about school breakfast—a “by teens, for teens” approach. Her presentation focused on the strategies used to engage the students to create a more effective campaign. It included the materials they developed for school food service administrators based on the input from the students—a ‘best practices’ guide for making school breakfast more attractive and accessible to students, and a handbook on using Twitter to promote school breakfast.

Askelson had attended the conference in years past and thought the school breakfast research was a good fit for Golembiewski.

Golembiewski finished her MPH in Health Communication in May, and hopes to pursue her Ph.D. in public health. Her research interest is improving access to mental health care services, especially among vulnerable populations in the US.

Under Dr. Askelson, she worked on a variety of other research projects related to health communication and health promotion. Some highlights include: helping to develop statewide campaigns promoting school meals in Iowa, evaluations of government programs related to fruit and vegetable consumption and adolescent pregnancy prevention, and conducting formative research with automotive professionals for the national driver safety campaign.

ISRC Call Center



The University of Iowa Hawkeye Poll is part of the teaching/learning mission of the University as well as a rigorously designed public opinion polling operation. The Poll provides a platform for academic research on political and public policy topics, including elections, policy issues, and attitudes and beliefs about Iowa and the national political/public policy environment. UI students get experience in survey research that connects to their academic work as they serve as trained callers and work with results in their classes.

The Iowa Social Science Research Center

The Iowa Social Science Research Center is a resource for inter-disciplinary social science research. It provides grant development support and data collection, management, and access services to the university community. The past year saw continued growth at the ISRC. A new full time Data Manager and a new Field Manager were welcomed to the team, and they have expanded services to include statistical and data consulting for faculty and students. This includes recurring workshops to introduce researchers to statistical software, programming languages, and advanced methodological techniques.

ISRC Accomplishments from 2014-15

- Assisted with the submission of 50 grant proposals for a total of \$7,019,642 of funding; of these, 11 grants were funded for a total of \$1,606,220 and eight proposals are still pending.
- In addition to continuing projects initiated in 2013-2014, the center fielded 17 surveys or research-based initiatives (Medicaid 2014, Families Dealing with Disaster - Wildfire and Stress Survey, University of Iowa Football Game Day Experience 2015, Iowa Health and Wellness 2014, Integrated Health Home 2014, Polk County Health Services, Soda Tax Pilot, PAADR - Fracture, Dental Wellness - Consumer, Dental Wellness - Provider, Workplace Violence Programs Pilot 2015, Hawkeye Poll Spring 2015, Chronic Conditions Survey 2015, Community Care Coordination Evaluation, Poultry Producer Study 2015, Janssen Transcription, and Isla Vista Tragedy Study 2014).
- Scheduled five surveys or research-based initiatives for 2015-16 (Health Information Technology and Meaningful Use in Iowa Practices, Hawkeye Poll Fall 2015, Integrated Health Home 2015, Polk County Health Services, and Families Affected by Flooding).
- Conducted 4,850 telephone interviews with average duration of 16 minutes.
- Conducted mail surveys with 5,629 completed surveys returned.
- Conducted web surveys with 4,675 completed online surveys.
- Trained 19 University of Iowa students in social science research activities including data collection methodology and human subjects training.
- Worked with 15 Departments/Units and across six Colleges on grant development, survey research development, and data collection including: Political Science, Sociology, Anthropology, Communication Studies, Economics, Geography and Sustainability Sciences, Linguistics, Health Management and Policy, Journalism and Mass Communication, Occupational and Environmental Health, Computer Science, History, Iowa Lakeside Labs, School of Social Work, School of Urban and Regional Planning, College of Dentistry, College of Liberal Arts and Sciences, College of Public Health, College of Law, College of Nursing, and College of Business.
- The University of Iowa along with the University of Nebraska-Lincoln (UNL), Iowa State University (ISU), and other consortium partners won National Science Foundation (NSF) funding to establish the Central Plains Federal Statistical Research Data Center (FSRDC), the first Federal Data Center in the Great Plains. The center will be based at UNL and ISU is scheduled to build a satellite location by 2018. The ISRC will be the University of Iowa coordinator for this endeavor.



Funded Grants

- BIGDATA: F: New Algorithms of Online Machine Learning for Big Data. Tianbao Yang, Department of Computer Science, National Science Foundation; \$712,401
- Journeys in World Politics: A Mentoring Workshop for Junior Women Studying International Relations. Kelley Kadera & Sara Mitchell, Department of Political Science, National Science Foundation; \$121,435
- Habit Formation and the Persistent Impact of WIC. David Frisvold, Department of Economics, University of California - Davis; \$25,000
- Filled with Spirit. Ellen Lewin, Departments of Anthropology & Gender, Women, and Sexuality Studies, Louisville Institute; \$25,000
- The Role of Universities in Regional Entrepreneurship Ecosystems of U.S. College Towns. Haifeng Qian, School of Urban and Regional Planning, Kauffman Foundation; \$60,000
- CRII: III: Scaling Up Distance Metric Learning for Large-Scale Ultrahigh-Dimensional Data. Tianbao Yang, Department of Computer Science, National Science Foundation; \$174,576
- Documenting the Language of the Baduy. William Davies, Department of Linguistics, American Institute for Indonesian Studies; \$5,000
- Automated Water Quality Monitoring of West Lake Okoboji. Michael Lannoo, Iowa Lakeside Lab/Division of Continuing Education, Dickinson County; \$17,000
- Standardized World Income Inequality Database. Frederick Solt, Department of Political Science, National Science Foundation; \$227,436
- Identity Claims: Expanding the Issue Correlates of War (ICOW) Dataset. Sara Mitchell, Department of Political Science, University of North Texas/Office of Naval Research, Department of Defense; \$204,372
- Automated Water Quality Monitoring of West Okoboji Lake: Phase II. Michael Lannoo, Iowa Lakeside Lab/Division of Continuing Education, Okoboji Foundation; \$34,000



Publications

Environmental Policy Program Publications, Reports, and Presentations

V Smith, Kerry, Carol Mansfield, and Aaron Strong, 2014. “How Should The Health Benefits Of Food Safety Programs Be Measured?” 24. *Adv Health Econ Health Serv Res*: 161-202

Y.J. Kim, S.N. Spak, G.R. Carmichael, N. Riemer, C.O. Stanier , 2014. Modeled aerosol nitrate formation pathways during wintertime episodes in the Great Lakes region of North America. *Journal of Geophysical Research-Atmospheres* 119, 12,420–12,445, doi: 10.1002/2014JD022320.

M.A. Mena-Carrasco, P.E. Saide, R. Delgado, P. Hernandez, S.N. Spak, L.T. Molina, G.R. Carmichael, X. Jiang , 2014. Regional climate feedbacks in Central Chile and their effect on air quality episodes and meteorology. *Urban Climate* 10, 771-781, doi: 10.1016/j.uclim.2014.06.006.

P.E. Saide, S.N. Spak, R.B. Pierce, J.A. Otkin, T. Schaack, A. Heidinger, A. M. da Silva, M. Kacenelenbogen, J. Redemann, G.R. Carmichael , 2015. Central American biomass burning smoke can increase tornado severity in the US, *Geophysical Research Letters* 42, doi: 10.1002/2014GL062826

M.C. Wyant, C.S. Bretherton, R. Wood, G.R. Carmichael, A. Clarke, J. Fast, R. George, W.I. Gustafson, C. Hannay, A. Lauer, Y. Lin, J.-J. Morcrette, J. Mulcahy, P.E. Saide, S.N. Spak, Q. Yang , 2015. Global and regional modeling of clouds and aerosols in the marine boundary layer during VOCALS: The VOCA Intercomparison. *Atmospheric Chemistry & Physics* 15, 53-172, doi:10.5194/acp-15-153-2015.

S. Kulkarni, N. Sobhani, J.P. Miller-Schulze, M.M. Shafer, J.J. Schauer, P.A. Solomon, P.E. Saide, S.N. Spak, Y.F. Cheng, H.A.C. Denier van der Gon, Z. Lu, D.G. Streets, G. Janssens-Maenhout, C. Wiedenmyer, J. Lantz, M.S. Artamonova, B. Chen, S.A. Imashev, L.G. Sverdlik, J.T. Deminter, B. Adhikary, A. D’Allura, C. Wei, G.R. Carmichael , 2015. Source sector and region contributions to black carbon and PM2.5 in Central Asia. *Atmospheric Chemistry & Physics* 15, 1683-1705, doi:10.5194/acp-15-1683-2015

A. Singh, S.N. Spak, E.A. Stone, J. Downard, R. Bullard, M. Pooley, P.A. Kostle, M.W. Mainprize, M.D. Wichman, T. Peters, D. Beardsley, C. Stanier , 2015. Uncontrolled combustion of shredded tires in a landfill - Part 2: Population exposure, public health response, and an air quality index for urban fires. *Atmospheric Environment* 104, 273-283, doi:10.1016/j.atmosenv.2015.01.002.

J. Downard, A. Singh, R. Bullard, T. Jayarathne, C. Rathnayake, D.L. Simmons, B.R. Wels, S.N. Spak, T. Peters, D. Beardsley, C. Stanier, E.A. Stone, 2015. Uncontrolled combustion of shredded tires in a landfill – Part 1: Characterization of gaseous and particulate emissions. *Atmospheric Environment* 104, 195-204, doi:10.1016/j.atmosenv.2014.12.059.

A.A. Peverly, Y. Ma, M. Venier, Z. Rodenburg, S.N. Spak, K.C. Hornbuckle, R.A. Hites, 2015. Variations of flame retardants, polycyclic aromatic hydrocarbons, and pesticide concentrations in Chicago’s atmosphere measured using passive sampling. *Environmental Science & Technology* 49, 5371-5379, doi: 10.1021/acs.est.5b00216.

M. Huang, K.W. Bowman, G.R. Carmichael, M. Lee, T. Chai, S.N. Spak, D.K. Henze, A.S. Darmanov, A.M. da Silva, Improved western US background ozone estimates via constraining nonlocal and local source contributions using Aura TES and OMI observations. *Journal of Geophysical Research-Atmospheres* 120, doi: 10.1002/2014JD022993.

Jan Crawford, Lucie Laurian, Organisational factors influencing implementation of environmental sustainability (Part 2). *Planning Quarterly*, Issue 196 - March 2015.

Aaron Strong, Chris Goemans, Quantity Uncertainty and Demand: The Case of Water Smart Reader Ownership, B.E. *Journal of Economic Analysis & Policy*. Volume 14, Issue 3, Pages 669–694, ISSN (Online) 1935-1682, ISSN (Print) 2194-6108

Aaron Strong, Chris Goemans, The impact of real-time quantity information on residential water demand, *Water Resources and Economics*, Volume 10, April 2015, Pages 1-13, ISSN 2212-4284

Health Policy Program Publications, Reports, and Presentations

Kateeb, E; McKernan, S; Gaeth, G; Kuthy, R; Adrianse, N; Damiano, PC., “Predicting Dentists Decisions: A Choice-Based Conjoint Analysis of Medicaid Participation.” *Journal of Public Health Dentistry*. Under review.

Park, K, Damiano P., Examining disclosure of gambling problems using the integrated model of health disclosure decision-making. *Journal of Applied Communication Research*. Under review.

Reynolds, J; Damiano, P; Glanville, J; Oleson, J; McQuistan, M. , “Neighborhood and Family Social Capital and the Oral Health of Children in Iowa” Submitted to the *Journal of Community Dentistry and Oral Epidemiology*. Under review.

Wright, B; Bentler, SE; Damiano, PC. , “Assessing the Capacity of Iowa’s Community Health Centers to Respond to Opportunities and Challenges of the Affordable Care Act.” *Journal of the Poor and Underserved*. 2014. Nov; 25(4):2032-43. doi: 10.1353/hpu.2014.0175. PMID:25418257

Askelson, NM; Chi, DL; Momany, E; Kuthy, R; Ortiz, C; Hanson, JD; Damiano, P. , “Encouraging Early Preventive Dental Visits for Preschool-aged Children Enrolled in Medicaid: Using the Extended Parallel Process Model to Conduct Formative Research”. *J Public Health Dent*. 2014 Winter; (1):64-70. doi: 10.1111/j.1752-7325.2012.00369.x. PMID: 22994600

Dabitt, JY; Romitti, PA; Makelarski, JA; Tyler, MC; Damiano, PC; Druschel, CM; Robbins, JM; Caspers, KM; Burnett, WB, “Examination of Mental Health Status and Aggravation Level Among Mothers of Children with Isolated Oral Clefts.” *Cleft Palate Craniofac J*. 2014 Jul;51(4):e80-7. doi: 10.1597/12-298. PMID: 24047435

Wright, B; Bentler, SE; Damiano, PC. , “Implementation of the Affordable Care Act and Rural Health Clinic Capacity in Iowa.” *Journal of Primary Care and Rural Health* (as a Research Letter). 2015. Jan; 6(1):61-5. doi:10.1177/2150131914542613. PMID: 25092474



Publications, cont.

- Darling B; Kanellis M; McKernan S; Damiano PC. , “Potential Utilization of Expanded Function Dental Auxiliaries to Place Restoratives.” *Journal of Public Health Dentistry*. 2015 Mar; 75(2):163-8. doi:10-1111/jphd.12089. PMID: 25753611.
- Reynolds, JC; McKernan, S; Kuthy, R; Adrianse, N; Mani, S; Damiano, PC. , “Public Dental Safety Net in Iowa: Capacity and Readiness for Health Care Reform.” Submitted to the *Journal of Health Care for the Poor and Underserved*. Under review.
- Askelson, N. M., Chi, D. L., Momany, E. T., Kuthy, R. A., Carter, K. D., Field, K., Damiano, PC. , “The importance of efficacy: Using the Extended Parallel Process Model to examine factors related to preschool-age children enrolled in Medicaid receiving preventive dental visits.” *Health Education & Behavior*. 2015 Apr 10. pii: 1090198115580575. PMID: 258623302
- McKernan, SC; Reynolds, JC; Momany, ET; Kuthy, RA; Kateeb, ET; Adrianse, NB; Damiano PC. , “The Relationship between Altruistic Attitudes and Dentists’ Medicaid Participation.” *J Am Dent Assoc*. 2015 Jan; 146(1):34-41. e3. doi:10.1016/j.adaj.2014.11.014. PMID: 25569496.
- Kateeb, E; Warren, J; Gaeth, G; Damiano, PC; Momany, ET; Kanellis, MJ; Weber-Gasparoni, K; Ansley, TN. , “The Willingness of US Pediatric Dentists to Use Atraumatic Restorative Treatment (ART) with their Patients: A Conjoint Analysis.” *Journal of Public Health Dentistry*. 2014 Summer; 74(3):234-40. doi: 10.1111/jphd.12052. PMID: 24635596
- Kuthy, RA; Pendharkar, B; Momany, ET; Jones, M; Askelson, NM; Chi, DL; Wehby, GL; Damiano, PC. , “Time Until First Dental Caries for Young Children First Seen in Community Health Centers.” *Community Dent Oral Epidemiol*. 2014 Aug; 42(4):300-10. doi: 10.1111/cdoe.12096. PMID: 24483730
- Singhal A, Caplan DJ, Jones MP, Momany ET, Kuthy RA, Buresh CT, Isman R, Damiano PC, Eliminating Medicaid adult dental coverage in California led to increased dental emergency visits and associated costs. *Health Aff (Millwood)*. 2015 May;34(5):749-56. doi: 10.1377/hlthaff.2014.1358. PubMed PMID: 25941275.
- McKernan SC, Kuthy RA, Hanley PF, Jones MP, Momany ET, McQuistan MR, Damiano PC, Geographic variation of dental utilization among low income children. *Health Place*. 2015 Jul;34:150-6. doi: 10.1016/j.healthplace.2015.05.002. Epub 2015 May 28. PubMed PMID: 26026599.
- Singhal A, Caplan DJ, Jones MP, Kuthy RA, Momany ET, Buresh CT, Damiano PC. , Parental Perceptions of Avoidability of their Child’s Emergency Department Visit. *Emergency Medicine Journal*. Under review.
- Kateeb ET, McKernan SC, Gaeth GJ, Kuthy RA, Adrianse NB, Damiano PC. , Predicting dentists’ decisions: A choice-based conjoint analysis of Medicaid participation. *J Pub Health Dent*. Under review.
- McKernan SC, Reynolds JC, Kuthy RA, Damiano PC. , Results of the 2013 survey of Iowa dentists: participation in the Title 19 program & other practice characteristics. *IA Dent J*. 2014; 100(3):17-24.
- Bentler SE, Damiano PC, Momany ET, Ingleswar A, and Robinson E., “First Look At Iowa’s Medicaid Expansion: How Well Did Members Transition To The Iowa Health & Wellness Plan From IowaCare”. Iowa City, IA: University of Iowa Public Policy Center. (2014)
- Damiano PC, Park KH, and Robinson E. , “Health Disparities Among Children in Iowa: Results From The 2010 Iowa Child And Family Household Health Survey”. Iowa City, IA: University of Iowa Public Policy Center. (2014)
- Askelson NM, Bentler SE, Momany ET, Golembiewski EH, and Damiano PC. , “Iowa Medicaid Health Home Providers: A Qualitative Examination of the Implementation of The Iowa Medicaid Health Home”. Iowa City, IA: University of Iowa Public Policy Center. (2014)
- Bentler SE, Damiano PC, Momany ET, McInroy B, and Robinson E, “Post-Enrollment Experiences of Iowa Medicaid Health Home Program Adults and Children”. Iowa City, IA: University of Iowa Public Policy Center. (2014)
- Wright B, Damiano PC, and Bentler SE. , “Ready or Not? The Affordable Care Act and Safety-Net Primary Care Clinic Capacity in Iowa”. Iowa City, IA: University of Iowa Public Policy Center. (2014)
- Momany ET, Nguyen-Hoang P, Damiano PC, Bentler SE, Shane DM., Cost Analyses of the Iowa Medicaid Health Home Program. Iowa City, IA: The University of Iowa Public Policy Center. (2014)
- Bentler SE, Damiano PC, Momany ET, McInroy B, Robinson E, Pooley MJ. , Evaluation of the Iowa Health and Wellness Plan: Member Experiences in the First Year. Iowa City, IA. The University of Iowa Public Policy Center. (2015)
- Damiano PC, Park KH, Robinson E. , Health Disparities Among Children in Iowa: Results from the 2010 Iowa Child and Family Household Health Survey. Iowa City, IA: University of Iowa Public Policy Center (2014)
- Momany ET, Damiano PC, Bentler SE. , Outcomes for Iowa Medicaid Health Home Program Enrollees 2011-2013. Iowa City, IA: The University of Iowa Public Policy Center. (2014)
- Momany ET, Damiano PC, Bentler SE, Askelson NM, Nguyen-Hoang P, Shane DM. , Summary Report of the Iowa Medicaid Medical Health Home: Evaluation of a Health Home Program for those with Chronic Illnesses. Iowa City, IA: The University of Iowa Public Policy Center. (2015)
- Kateeb E, Askelson N, McKernan S, Momany E, Damiano P. , Using Stage of Change to Understand Dentists’ Medicaid Participation Behavior. Poster Presentation at the International Association for Dental Research Annual Meeting, Boston, MA. March 14, 2015.
- Ingleswar, A; McKernan, S; Momany, E; Bentler, S; Damiano, PC. , “Effect of Chronic Physical and Mental Conditions on Dental Utilization.” National Oral Health Conference. Kansas City, MO. 2015.
- Kateeb, E; Gaeth, G; McKernan, S; Kuthy, RA, Damiano, PC. , “Factors Related to Dentists’ Decision to Participate in Medicaid: A Conjoint Analysis.” National Oral Health Conference. Ft. Worth, TX. 2014.



Publications, cont.

McKernan, S; Kuthy R; Reynolds, J; Adrianse, N, Kateeb, E; Damiano, PC. , “Dentists’ Attitudes Toward Medicaid and Low Income Patients in Iowa.” National Oral Health Conference. Ft. Worth, TX. 2014.

Kuthy, RA; McKernan, S; Reynolds, J; Adrianse, N; Damiano, PC. , “The Public Health Safety Net: Iowa’s CHC Capacity to Meet Anticipated Dental Demand in 2014 and Beyond.” National Oral Health Conference. Ft. Worth, TX. 2014.

Darling, B; Kanellis, MJ; McKernan, S; Damiano, PC, “Iowa Dentists’ Willingness to Utilize Auxiliaries to Perform Restorative Procedures. Journal of Dental Research 93 (A), 2014.

Social Science Policy Program Publications, Reports, and Presentations

Nguyen-Hoang, Phuong, 2015. “Volatile Earmarked Revenues and State Highway Expenditures in the United States.” *Transportation***, 42(2): 237-256.

Nguyen-Hoang, Phuong, and Ryan Yeung, 2014. “Dollars for Lives: The Effect of Highway Capital Investments on Traffic Fatalities.” *Journal of Safety Research**, *51: 109– 115.

Nguyen-Hoang, Phuong and John Yinger, 2014. “Education Finance Reform, Local Behavior, and Student Performance in Massachusetts” *Journal of Education Finance*, 39(4): 297–322.

Ahn, T.K., Robert Huckfeldt, Jeanette Mendez, Tracy Osborn, and John B. Ryan, 2014. “Experts, Activists, and the Social Communication of Political Expertise.” In Ahn, Huckfeldt and Ryan, eds. Experts, Activists, and Interdependent Citizens: Are Electorates Self-Educating? New York: Cambridge University Press

Nguyen-Hoang, Phuong and Yilin Hou, 2014. “Local Fiscal Responses To Procyclical Changes in State Aid.” *Publius*, 44(4): 587–608.

Nguyen-Hoang, Phuong, Ryan Yeung and Alex Bogin, 2014. “No Base Left Behind: The Impact of Military Base Closures on Educational Expenditures and Outcomes.” *Public Finance Review*, 42(4): 439–465.

Alexander Bogin, and Phuong Nguyen-Hoang, 2014. “Property Left Behind: An Unintended Consequence of a No Child Left Behind “Failing” School Designation.” *Journal of Regional Science***, 54(5): 788–805.

Nguyen-Hoang, Phuong, 2014. “School District Income Taxes and School Inputs: The Case of Ohio.” *Journal of Education Finance***, 40(1): 38–59.

Phuong Nguyen-Hoang, 2014. “Tax Increment Financing and Education Expenditures: The Case of Iowa.” *Education Finance and Policy*, 9(4): 515–540.

Tae Ho Eom, William Duncombe, Phuong Nguyen-Hoang, and John Yinger, 2014. “The Unintended Consequences of Property Tax Relief: New York’s STAR Program.” *Education Finance and Policy***, *9(4): 446–480.

Osborn, Tracy, 2014. “Women State Legislators and Representation: The Role of Political Parties and Institutions.” State and Local Government Review 46(2): 146-155.

Duncombe, William, Phuong Nguyen-Hoang, and John Yinger, 2015. “Measurement of Cost Differentials.” In *Handbook of Research in Education Finance and Policy*, edited by Helen F. Ladd and Margaret E. Goertz. Routledge

Hays, Jude; Emily Schilling; and Frederick J. Boehmke, Accounting for Right Censoring in Interdependent Duration Analysis. Political Analysis (forthcoming)

Boehmke, Frederick J., Olga Chyzh and Cameron Thies, An Approach to Modeling Endogeneity between Network Position and Its Effect. Political Science Research and Methods (forthcoming)

Nguyen-Hoang, Phuong, and Ryan Yeung, Forthcoming. “Endogenous Peer Effects: Fact or Fiction?” *Journal of Educational Research*. DOI: 10.1080/00220671.2014.918528

Kreitzer, Rebecca J. and Frederick J. Boehmke, Modeling Heterogeneity in Pooled Event History Analysis. State Politics and Policy Quarterly (forthcoming)

Frisvold, D., Fletcher, J., Tefft, N., Non-Linear Effects of Soda Taxes on Consumption and Weight Outcomes,” Health Economics, 2015, 24(5), 566-582.

Frisvold, D., Nutrition and Cognitive Achievement: An Evaluation of the School Breakfast Program,” Journal of Public Economics, 2015, 124, 91-104.

Frisvold, D., Gazmararian, J., Zhang, K., Koplan, J., Obesity Is Associated with an Increase in Pharmaceutical Expenses among University Employees,” Journal of Obesity, 2015, Article ID 298698.

Boehmke, Frederick J. and Chuck Shipan, Oversight Capabilities in the States: Are Professionalized Legislatures Better at Getting What They Want? State Politics and Policy Quarterly (forthcoming)

Desmarais, Bruce; Jeffrey J. Harden and Frederick J. Boehmke, Persistent Policy Pathways: Inferring Policy Diffusion Networks in the American States. American Political Science Review (forthcoming)

Boehmke, Frederick J. and Richard Witmer, State Lobbying Registration By Native American Tribes. Politics, Groups, and Identities (forthcoming)

Frisvold, D., Giri, A., The Potential of Early Childhood Education as a Successful Obesity Intervention,” in Obesity Interventions in Underserved US Populations: Evidence and Directions, edited by Virginia Brennan, Shiriki Kumanyika, and Ruth Zambrana, Johns Hopkins University Press, 2014.

Boehmke, Frederick J. and R. Michael Alvarez, Where the Good Signatures Are: Signatures Collection and Initiative Qualification In California. Social Science Journal (forthcoming)

Frisvold, D., The Relationship between the School Breakfast Program and Food Insecurity,” USDA. (March 2015). Invited. Frisvold, D.



Publications, cont.

- Frisvold, D., “Does Full-Day Kindergarten Combined with Small Class Size Boost Test Scores?,” Middle Tennessee State University. (March 2015). Invited.Frisvold, D.
- Frisvold, D., “Does Full-Day Kindergarten Combined with Small Class Size Boost Test Scores?,” Wake Forest University. (March 2015). Invited.Frisvold, D.
- Frisvold, D., “The Impact of the School Breakfast Program on Childhood Obesity,” Vanderbilt University. (March 2015). Invited.Frisvold, D.
- Frisvold, D., “The Relationship between the School Breakfast Program and Food Insecurity,” Association for Public Policy Analysis and Management Fall Conference, Albuquerque. (November 2014).Frisvold, D.
- Frisvold, D., “The Relationship between the School Breakfast Program and Food Insecurity,” Iowa State University. (November 2014). Invited.Frisvold, D.
- Frisvold, D., “The Relationship between the School Breakfast Program and Food Insecurity,” University of Minnesota. (October 2014). Invited.Frisvold, D.
- Frisvold, D., “The Relationship between the School Breakfast Program and Food Insecurity,” Agricultural and Applied Economics Association Conference, Minneapolis. (July 2014).Frisvold, D.
- Frisvold, D., “The Relationship between the School Breakfast Program and Food Insecurity,” American Society of Health Economists Biennial Conference. (June 2014).Frisvold, D.
- Frisvold, D., “Public Policy and Obesity,” Legislative Lunch and Learn, Iowa State Capital. (March 2015). Presentation to state legislators and policy advisors to the governor.Frisvold, D.
- Frisvold, D., “Public Policy and Personal Health: Effective Tools for Combating Obesity,” Hawkeye Lunch and Learn Community Seminar, University of Iowa. (November 2014).Frisvold, D.
- Boehmke, F., 2015 Department of Political Science, Washington University, Pivotal Politics Meets the Progressive Paradox, with Tracy L Osborn and Emily Schilling.Boehmke, F.
- Boehmke, F., 2014 Departments of Political Science, University of Kansas, Methods Workshop: Duration Models for Social Scientists.Boehmke, F.
- Boehmke, F., 2014 Department of Political Science, University of North Carolina, Chapel Hill, Pivotal Politics Meets the Progressive Paradox, with Tracy L Osborn and Emily Schilling.Boehmke, F.
- Tracy Osborn, Rebecca Kreitzer, EmilySchilling, and Jennifer Hayes Clark., “Polarization in Roll Call Voting among Women State Legislators.” Invited presentation at the Conference on Women, Gender, and Conservative Parties in the 21st Century, Case Western Reserve University, Cleveland, Ohio (October).Tracy Osborn, Rebecca Kreitzer, EmilySchilling, and Jennifer Hayes Clark.
- Tracy Osborn, Emily Schilling. , “When Women Are in Charge: Critical Mass and Agenda Control in New Hampshire.” Paper to be presented at the Western Political Science Association annual meeting, Las Vegas, NV. (April 2015)
- Tracy Osborn, Emily Schilling.
- Tracy Osborn, Jeanette Mendez, Candice Ortals, and Lori Poloni-Staudinger. , “Scared of Women and Mothers? Media Framing and Public Reactions to Gendered Terrorism.” Paper to be presented at the 4th European Conference on Politics and Gender, Uppsala, Sweden (June 2015).Tracy Osborn, Jeanette Mendez, Candice Ortals, and Lori Poloni-Staudinger.
- Tracy Osborn, Jeanette Mendez, Candice Ortals, and Lori Poloni-Staudinger. , “Scared of Women and Mothers? Media Framing and Public Reactions to Men and Women Terrorists.” Paper presented at the American Political Science Association, Washington, DC. (August 2014)Tracy Osborn, Jeanette Mendez, Candice Ortals, and Lori Poloni-Staudinger.

Transportation & Vehicle Safety Policy Program Publications, Reports, and Presentations

- Bronuela, L., H. Lee, S. Ryu and Y. Cho, “Cantilever and pull-out tests and corresponding FEM models of various dowel bars in airport concrete pavement,” Construction and Building Materials, Elsevier, Volume 83, 2015, pp. 181-188.
- Jung, Y., H. Lee, M. Lee, S. Choi and Y. Cho, “Concept of Film Thickness Applied to a New Approach for Polymer Concrete Mix Design for Airport Pavement Repair” Transportation Research Record: Journal of Transportation Research Board, No. 2440, TRB, pp., 2014, 103-109.
- Hallmark, S.L., Tyner, S., Oneyear, N., Carney, C. and McGehee, D.V. , Evaluation of safety risk on rural curves using SHRP2 naturalistic driving data. Journal of Safety Research. (Submitted).
- McGehee, D.V. , Head Injury in Automobile Crashes: Human factors, effects and prevention. In: Head Injury and Post-concussive Syndrome. M. Rizzo and D. Tranel, Eds. New York: Churchill Livingstone. (1995).
- Hamann, C.J., Peek-Asa, C., McGehee, D.V. , Helmet camera study of adult and child bicycling patterns and injury risk factors by gender. Proceedings of the Society for Advancement of Violence and Injury Research (SAVIR). (submitted).
- Wu, Y., Boyle, L.N., McGehee, D.V., Ebe, K., Foley, J. , Modeling types of pedal applications using a driving simulator. Human Factors: The Journal of the Human Factors and Ergonomics Society. (2015).
- Chen, X.J., Yany, J.Z., Peek-Asa, C., McGehee, D.V., Li, L.P., Parents’ knowledge, attitude, and use of child restraints in Shantou, China. American Journal of Preventive Medicine. 46(1): 85-88. (2014).
- Stewart, K., Fan, J., McGehee, D.V., Schwartz, C. , Spatiotemporal analysis of parking behaviors in naturalistic driving. Association of American Geographers Annual Meeting. (submitted).
- Durbin, D., McGehee, D.V., Fisher, D.L., McCartt, A. , Special considerations in distracted driving with teens. Annals of Advances in Automotive Medicine. 58:69-83. (2014).
- Klauer, S., Ehsani, J., McGehee, D.V., Manser, M. , The effect of secondary task engagement on adolescents driving performance and crash risk. Journal of Adolescent Health. 57(1) 36-43. (2015).



Publications, cont.

McGehee, D.V., Kaufman, R.P., Buresh, C.T., Harland, K.K., Lilienthal, M.A., Utilization of crash scene photos of vehicle damage and intrusion to improve trauma care preparedness. (2nd Review).

McGehee, D.V. , Visual and cognitive distraction metrics in the age of the smart phone. Annals of Advances in Automotive Medicine. 58: 15–23. (2014).

Reyes, M.L., Carney, C., McGehee, D.V. , Young drivers. Human Factors in Traffic Safety. Alison Smiley ed. Third Edition. Lawyers and Judges Publishing. (2015).

Jennissen, C.A., DeShaw, J., Meusch, J.C., Denning, G.M., McGehee, D.V., Rahmatalla, S.F. , Dynamic responses of experienced all-terrain vehicle operator to simulator unexpected terrain changes. Proceedings of the Annual Human Factors and Ergonomics Society Annual Meeting. (2014). Jennissen, C.A., DeShaw, J., Meusch, J.C., Denning, G.M., McGehee, D.V., Rahmatalla, S.F.

Hamann, C.J., Pooley, M., McGehee, D.V., Peek-Asa, C. , A naturalistic study of child and adult bicycling behaviors and risk exposure. International Cycling Safety Conference. Gothenburg, Sweden. (2014). Hamann, C.J., Pooley, M., McGehee, D.V., Peek-Asa, C.

McGehee, D.V., Kaufman, R. Buresh, C.T., Harland, K., Lilienthal, M. , Utilization of crash scene photography documenting vehicle damage and intrusion to improve trauma care preparedness. Proceedings of the 2015 Enhanced Safety of Vehicles Conference. US National Highway Traffic Safety Administration. (2015). McGehee, D.V., Kaufman, R. Buresh, C.T., Harland, K., Lilienthal, M.

Ahmed, T.A., H. Lee and C.M. Baek, “Evaluation Of Laboratory And Field Warm Mix Asphalt Mixtures With High Contents Of Reclaimed Asphalt Pavement,” Proceedings of the 6th International Conference ‘Bituminous Mixtures and Pavements, Thessaloniki, June 2015 Ahmed, T.A., H. Lee and C.M. Baek